

ARG66870 anti-Cytokeratin 7 antibody

Package: 100 µg
Store at: -20°C

Summary

Product Description	Mouse Monoclonal antibody recognizes Cytokeratin 7
Tested Reactivity	Hu, Ms
Predict Reactivity	Rat
Tested Application	ICC/IF, IHC-P, IP, WB
Host	Mouse
Clonality	Monoclonal
Isotype	IgG
Target Name	Cytokeratin 7
Species	Human
Immunogen	Synthetic peptide of Human Cytokeratin 7.
Conjugation	Un-conjugated
Alternate Names	SCL; Sarcolectin; CK-7; Cytokeratin-7; CK7; Keratin, type II cytoskeletal 7; Keratin-7; K7; K2C7; Type-II keratin Kb7

Application Instructions

Application table	Application	Dilution
	ICC/IF	1:50 - 1:200
	IHC-P	1:200
	IP	1:200
	WB	1:1000 - 1:2000
Application Note	* The dilutions indicate recommended starting dilutions and the optimal dilutions or concentrations should be determined by the scientist.	
Observed Size	~ 54 kDa	

Properties

Form	Liquid
Purification	Affinity purification with immunogen.
Buffer	PBS (pH 7.4), 0.02% Sodium azide, 50% Glycerol and 0.5% BSA.
Preservative	0.02% Sodium azide
Stabilizer	50% Glycerol and 0.5% BSA
Storage instruction	For continuous use, store undiluted antibody at 2-8°C for up to a week. For long-term storage, aliquot and store at -20°C. Storage in frost free freezers is not recommended. Avoid repeated freeze/thaw

cycles. Suggest spin the vial prior to opening. The antibody solution should be gently mixed before use.

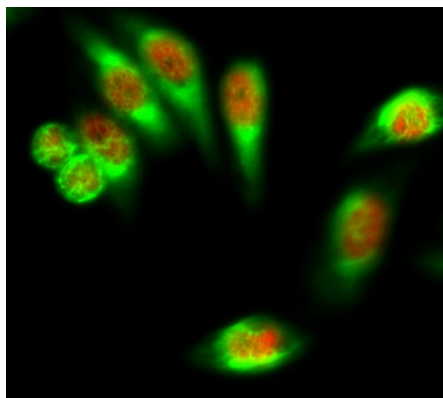
Note

For laboratory research only, not for drug, diagnostic or other use.

Bioinformation

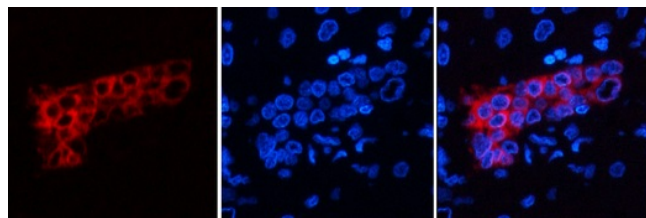
Gene Symbol	KRT7
Gene Full Name	keratin 7, type II
Background	The protein encoded by this gene is a member of the keratin gene family. The type II cytokeratins consist of basic or neutral proteins which are arranged in pairs of heterotypic keratin chains coexpressed during differentiation of simple and stratified epithelial tissues. This type II cytokeratin is specifically expressed in the simple epithelia lining the cavities of the internal organs and in the gland ducts and blood vessels. The genes encoding the type II cytokeratins are clustered in a region of chromosome 12q12-q13. Alternative splicing may result in several transcript variants; however, not all variants have been fully described. [provided by RefSeq, Jul 2008]
Function	Blocks interferon-dependent interphase and stimulates DNA synthesis in cells. Involved in the translational regulation of the human papillomavirus type 16 E7 mRNA (HPV16 E7). [UniProt]
Calculated Mw	51 kDa
PTM	Arg-20 is dimethylated, probably to asymmetric dimethylarginine. [UniProt]
Cellular Localization	Cytoplasm. [UniProt]

Images



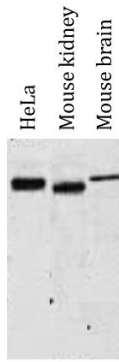
ARG66870 anti-Cytokeratin 7 antibody ICC/IF image

Immunofluorescence: HeLa cells stained with anti-FoxO1 antibody (red) at 1:200 dilution, overnight at 4°C, and co-stained with ARG66870 anti-Cytokeratin 7 antibody (green) at 1:200 dilution, overnight at 4°C.



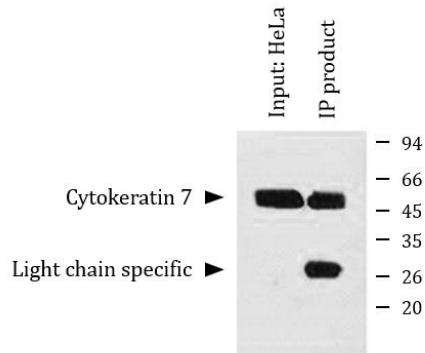
ARG66870 anti-Cytokeratin 7 antibody IHC-P image

Immunohistochemistry: Paraffin-embedded Human liver tissue stained with ARG66870 anti-Cytokeratin 7 antibody (red) at 1:200 dilution, overnight at 4°C. DAPI (blue) for nuclear staining.



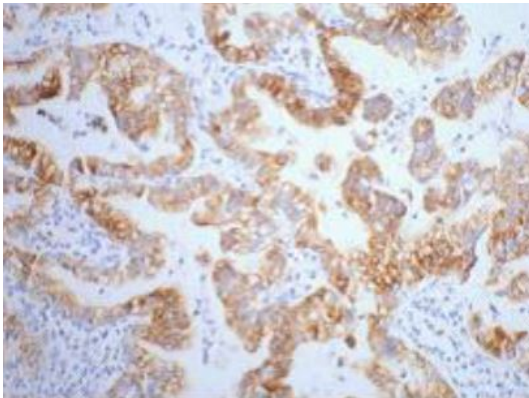
ARG66870 anti-Cytokeratin 7 antibody WB image

Western blot: HeLa, Mouse kidney and Mouse brain lysates stained with ARG66870 anti-Cytokeratin 7 antibody at 1:2000 dilution.



ARG66870 anti-Cytokeratin 7 antibody IP image

Immunoprecipitation: 1) Input: HeLa cell lysate, 2) IP product: IP dilute 1:200. Using ARG66870 anti-Cytokeratin 7 antibody.



ARG66870 anti-Cytokeratin 7 antibody IHC-P image

Immunohistochemistry: Paraffin-embedded Human lung cancer tissue stained with ARG66870 anti-Cytokeratin 7 antibody at 1:200 dilution.