

## ARG66898 anti-SLCO1A2 / OATP1A2 antibody

Package: 100 µl  
Store at: -20°C

### Summary

Product Description	Rabbit Polyclonal antibody recognizes SLCO1A2 / OATP1A2
Tested Reactivity	Hu
Tested Application	WB
Host	Rabbit
Clonality	Polyclonal
Isotype	IgG
Target Name	SLCO1A2 / OATP1A2
Species	Human
Immunogen	Synthetic peptide between aa. 251-300 of Human SLCO1A2 / OATP1A2.
Conjugation	Un-conjugated
Alternate Names	OATP-A; Organic anion-transporting polypeptide 1; OATP1A2; OATP; Sodium-independent organic anion transporter; SLC21A3; OATP-1; Solute carrier organic anion transporter family member 1A2; Solute carrier family 21 member 3

### Application Instructions

Application table	Application	Dilution
	WB	1:500 - 1:2000
Application Note	* The dilutions indicate recommended starting dilutions and the optimal dilutions or concentrations should be determined by the scientist.	
Positive Control	HeLa, A549, AD293 and HepG2	
Observed Size	70-75 kDa	

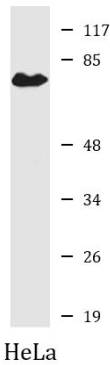
### Properties

Form	Liquid
Purification	Affinity purification with immunogen.
Buffer	PBS, 0.02% Sodium azide, 50% Glycerol and 0.5% BSA.
Preservative	0.02% Sodium azide
Stabilizer	50% Glycerol and 0.5% BSA
Concentration	1 mg/ml
Storage instruction	For continuous use, store undiluted antibody at 2-8°C for up to a week. For long-term storage, aliquot and store at -20°C. Storage in frost free freezers is not recommended. Avoid repeated freeze/thaw cycles. Suggest spin the vial prior to opening. The antibody solution should be gently mixed before use.

Bioinformation

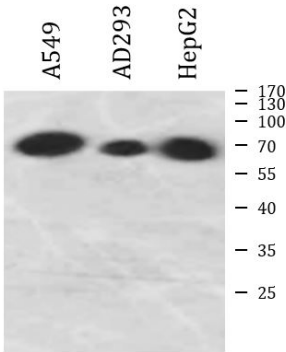
Gene Symbol	SLCO1A2
Gene Full Name	solute carrier organic anion transporter family, member 1A2
Background	This gene encodes a sodium-independent transporter which mediates cellular uptake of organic ions in the liver. Its substrates include bile acids, bromosulphophthalein, and some steroidal compounds. The protein is a member of the SLC21A family of solute carriers. Alternative splicing of this gene results in multiple transcript variants. [provided by RefSeq, Dec 2008]
Function	Mediates the Na(+)-independent transport of organic anions such as sulfobromophthalein (BSP) and conjugated (taurocholate) and unconjugated (cholate) bile acids (By similarity). Selectively inhibited by the grapefruit juice component naringin. [UniProt]
Calculated Mw	74 kDa
Cellular Localization	Cell membrane; Multi-pass membrane protein. [UniProt]

Images



ARG66898 anti-SLCO1A2 / OATP1A2 antibody WB image

Western blot: HeLa cell lysate stained with ARG66898 anti-SLCO1A2 / OATP1A2 antibody at 1:2000 dilution.



ARG66898 anti-SLCO1A2 / OATP1A2 antibody WB image

Western blot: A549, AD293 and HepG2 cell lysates stained with ARG66898 anti-SLCO1A2 / OATP1A2 antibody at 1:2000 dilution.