

ARG66900 anti-PI3 Kinase p85 alpha antibody

Package: 100 µl
Store at: -20°C

Summary

Product Description	Mouse Monoclonal antibody recognizes PI3 Kinase p85 alpha
Tested Reactivity	Ms, Rat
Predict Reactivity	Hu
Tested Application	IHC-P, WB
Host	Mouse
Clonality	Monoclonal
Isotype	IgG
Target Name	PI3 Kinase p85 alpha
Species	Human
Immunogen	Recombinant protein of Human PI3 Kinase p85 alpha.
Conjugation	Un-conjugated
Alternate Names	GRB1; PI3-kinase subunit p85-alpha; Phosphatidylinositol 3-kinase regulatory subunit alpha; IMD36; PtdIns-3-kinase regulatory subunit alpha; p85-ALPHA; p85; AGM7; PtdIns-3-kinase regulatory subunit p85-alpha; PI3-kinase regulatory subunit alpha; PI3K regulatory subunit alpha; Phosphatidylinositol 3-kinase 85 kDa regulatory subunit alpha

Application Instructions

Application table	Application	Dilution
	IHC-P	1:100 - 1:200
	WB	1:1000 - 1:2000
Application Note	* The dilutions indicate recommended starting dilutions and the optimal dilutions or concentrations should be determined by the scientist.	
Positive Control	NIH/3T3 and Rat liver	
Observed Size	~ 90 kDa	

Properties

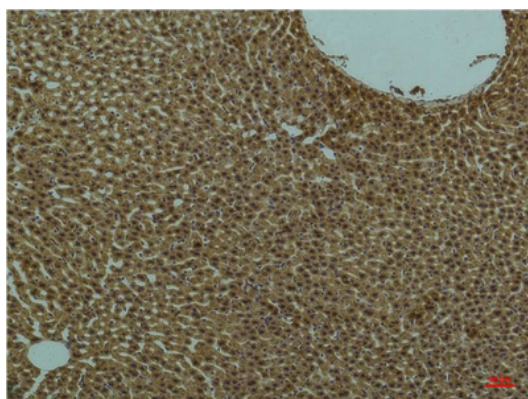
Form	Liquid
Purification	Affinity purification with immunogen.
Buffer	PBS, 0.02% Sodium azide, 50% Glycerol and 0.5% BSA.
Preservative	0.02% Sodium azide
Stabilizer	50% Glycerol and 0.5% BSA
Concentration	1 mg/ml

Storage instruction	For continuous use, store undiluted antibody at 2-8°C for up to a week. For long-term storage, aliquot and store at -20°C. Storage in frost free freezers is not recommended. Avoid repeated freeze/thaw cycles. Suggest spin the vial prior to opening. The antibody solution should be gently mixed before use.
Note	For laboratory research only, not for drug, diagnostic or other use.

Bioinformation

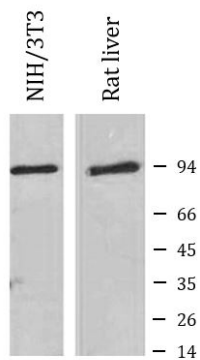
Gene Symbol	PIK3R1
Gene Full Name	phosphoinositide-3-kinase, regulatory subunit 1 (alpha)
Background	Phosphatidylinositol 3-kinase phosphorylates the inositol ring of phosphatidylinositol at the 3-prime position. The enzyme comprises a 110 kD catalytic subunit and a regulatory subunit of either 85, 55, or 50 kD. This gene encodes the 85 kD regulatory subunit. Phosphatidylinositol 3-kinase plays an important role in the metabolic actions of insulin, and a mutation in this gene has been associated with insulin resistance. Alternative splicing of this gene results in four transcript variants encoding different isoforms. [provided by RefSeq, Jun 2011]
Function	Binds to activated (phosphorylated) protein-Tyr kinases, through its SH2 domain, and acts as an adapter, mediating the association of the p110 catalytic unit to the plasma membrane. Necessary for the insulin-stimulated increase in glucose uptake and glycogen synthesis in insulin-sensitive tissues. Plays an important role in signaling in response to FGFR1, FGFR2, FGFR3, FGFR4, KITLG/SCF, KIT, PDGFRA and PDGFRB. Likewise, plays a role in ITGB2 signaling (PubMed:17626883, PubMed:19805105, PubMed:7518429). Modulates the cellular response to ER stress by promoting nuclear translocation of XBP1 isoform 2 in a ER stress- and/or insulin-dependent manner during metabolic overloading in the liver and hence plays a role in glucose tolerance improvement (PubMed:20348923). [UniProt]
Calculated Mw	84 kDa
PTM	<p>Polyubiquitinated in T-cells by CBLB; which does not promote proteasomal degradation but impairs association with CD28 and CD3Z upon T-cell activation.</p> <p>Phosphorylated. Tyrosine phosphorylated in response to signaling by FGFR1, FGFR2, FGFR3 and FGFR4. Phosphorylated by CSF1R. Phosphorylated by ERBB4. Phosphorylated on tyrosine residues by TEK/TIE2. Dephosphorylated by PTPRJ. Phosphorylated by PIK3CA at Ser-608; phosphorylation is stimulated by insulin and PDGF. The relevance of phosphorylation by PIK3CA is however unclear (By similarity). Phosphorylated in response to KIT and KITLG/SCF. Phosphorylated by FGR. [UniProt]</p>

Images



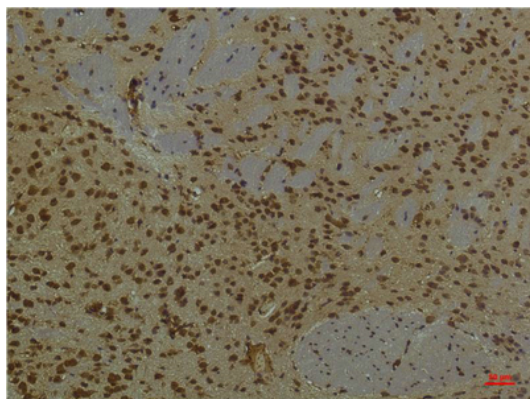
ARG66900 anti-PI3 Kinase p85 alpha antibody IHC-P image

Immunohistochemistry: Paraffin-embedded Rat liver tissue stained with ARG66900 anti-PI3 Kinase p85 alpha antibody at 1:200 dilution.



ARG66900 anti-PI3 Kinase p85 alpha antibody WB image

Western blot: NIH/3T3 and Rat liver lysates stained with ARG66900 anti-PI3 Kinase p85 alpha antibody at 1:2000 dilution.



ARG66900 anti-PI3 Kinase p85 alpha antibody IHC-P image

Immunohistochemistry: Paraffin-embedded Mouse brain tissue stained with ARG66900 anti-PI3 Kinase p85 alpha antibody at 1:200 dilution.