

## ARG66907 anti-TAS2R14 / T2R14 antibody

Package: 100 µl  
Store at: -20°C

### Summary

Product Description	Rabbit Polyclonal antibody recognizes TAS2R14 / T2R14
Tested Reactivity	Hu
Tested Application	ICC/IF, WB
Host	Rabbit
Clonality	Polyclonal
Isotype	IgG
Target Name	TAS2R14 / T2R14
Species	Human
Immunogen	Synthetic peptide derived from human TAS2R14 / T2R14
Conjugation	Un-conjugated
Alternate Names	T2R14; TRB1; Taste 2 receptor member 14; Taste receptor family B member 1

### Application Instructions

Application table	Application	Dilution
	ICC/IF	1:50 - 1:300
	WB	1:500 - 1:2000
Application Note	* The dilutions indicate recommended starting dilutions and the optimal dilutions or concentrations should be determined by the scientist.	
Positive Control	COLO205; MCF7	
Observed Size	37 kDa	

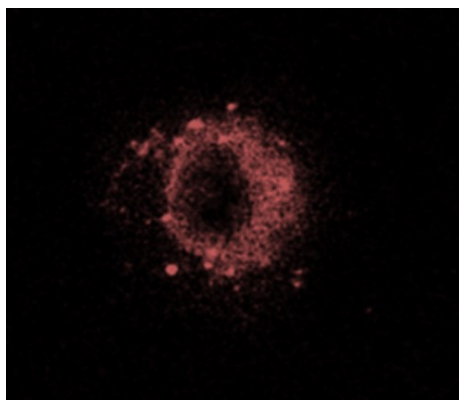
### Properties

Form	Liquid
Purification	Purified by antigen-affinity chromatography.
Buffer	1XPBS, 0.02% Sodium azide, 0.5%BSA and 50% Glycerol.
Preservative	0.02% Sodium azide
Stabilizer	0.5%BSA and 50% Glycerol
Storage instruction	For continuous use, store undiluted antibody at 2-8°C for up to a week. For long-term storage, aliquot and store at -20°C. Storage in frost free freezers is not recommended. Avoid repeated freeze/thaw cycles. Suggest spin the vial prior to opening. The antibody solution should be gently mixed before use.
Note	For laboratory research only, not for drug, diagnostic or other use.

## Bioinformation

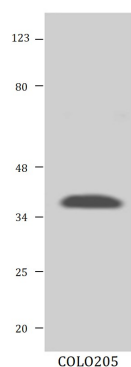
Gene Symbol	TAS2R14
Gene Full Name	taste 2 receptor member 14
Background	his gene product belongs to the family of candidate taste receptors that are members of the G-protein-coupled receptor superfamily. These proteins are specifically expressed in the taste receptor cells of the tongue and palate epithelia. They are organized in the genome in clusters and are genetically linked to loci that influence bitter perception in mice and humans. In functional expression studies, they respond to bitter tastants. This gene maps to the taste receptor gene cluster on chromosome 12p13. [provided by RefSeq, Jul 2008]
Function	Receptor that may play a role in the perception of bitterness and is gustducin-linked. May play a role in sensing the chemical composition of the gastrointestinal content. The activity of this receptor may stimulate alpha gustducin, mediate PLC-beta-2 activation and lead to the gating of TRPM5 (By similarity). [UniProt]
Calculated Mw	36.16 kDa
PTM	Glycoprotein
Cellular Localization	Membrane

## Images



ARG66907 anti-TAS2R14 / T2R14 antibody ICC/IF image

Immunofluorescence: MCF7 cells stained with ARG66907 anti-TAS2R14 / T2R14 antibody.



ARG66907 anti-TAS2R14 / T2R14 antibody WB image

Western blot: COLO205 cell lysate stained with ARG66907 anti-TAS2R14 / T2R14 antibody.