

ARG66922 anti-TIM3 antibody [SQab22265]

Package: 100 µl, 50 µl
Store at: -20°C

Summary

Product Description	Recombinant Rabbit Monoclonal antibody [SQab22265] recognizes TIM3
Tested Reactivity	Hu
Tested Application	FACS, IHC-P, WB
Host	Rabbit
Clonality	Monoclonal
Clone	SQab22265
Isotype	IgG
Target Name	TIM3
Species	Human
Immunogen	A synthetic peptide corresponding to the sequence of Human TIM-3.
Conjugation	Un-conjugated
Alternate Names	KIM-3; TIM3; TIMD-3; Tim-3; TIM-3; CD366; T-cell immunoglobulin and mucin domain-containing protein 3; TIMD3; T-cell membrane protein 3; HAVcr-2; T-cell immunoglobulin mucin receptor 3; Hepatitis A virus cellular receptor 2

Application Instructions

Application table	Application	Dilution
	FACS	1:100 - 1:200 (5 x 10 ⁵ cells)
	IHC-P	1:100 - 1:200
	WB	1:1000 - 1:3000
Application Note	IHC-P: Antigen Retrieval: Heat mediated was performed using Tris/EDTA buffer (pH 9.0). Incubate the samples at RT (18-25°C) for 30 min. * The dilutions indicate recommended starting dilutions and the optimal dilutions or concentrations should be determined by the scientist.	
Positive Control	Human tonsil	

Properties

Form	Liquid
Purification	Purification with Protein A.
Buffer	PBS, 0.01% Sodium azide, 40% Glycerol and 0.05%BSA.
Preservative	0.01% Sodium azide
Stabilizer	40% Glycerol and 0.05%BSA

Storage instruction	For continuous use, store undiluted antibody at 2-8°C for up to a week. For long-term storage, aliquot and store at -20°C or below. Storage in frost free freezers is not recommended. Avoid repeated freeze/thaw cycles. Suggest spin the vial prior to opening. The antibody solution should be gently mixed before use.
Note	For laboratory research only, not for drug, diagnostic or other use.

Bioinformation

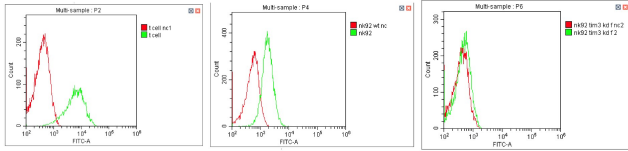
Gene Symbol	HAVCR2
Gene Full Name	hepatitis A virus cellular receptor 2
Background	The protein encoded by this gene belongs to the immunoglobulin superfamily, and TIM family of proteins. CD4-positive T helper lymphocytes can be divided into types 1 (Th1) and 2 (Th2) on the basis of their cytokine secretion patterns. Th1 cells are involved in cell-mediated immunity to intracellular pathogens and delayed-type hypersensitivity reactions, whereas, Th2 cells are involved in the control of extracellular helminthic infections and the promotion of atopic and allergic diseases. This protein is a Th1-specific cell surface protein that regulates macrophage activation, and inhibits Th1-mediated auto- and alloimmune responses, and promotes immunological tolerance. [provided by RefSeq, Sep 2011]
Function	Regulates macrophage activation. Inhibits T-helper type 1 lymphocyte (Th1)-mediated auto- and alloimmune responses and promotes immunological tolerance. May be also involved in T-cell homing. Receptor for LGALS9. [UniProt]
Highlight	Related products: Anti-Rabbit IgG secondary antibodies; Related news: New PD-1 ELISA Kit, excellent for preclinical studies or pharmaceutical development
Research Area	Immune System antibody
Calculated Mw	33 kDa
PTM	O-glycosylated with core 1 or possibly core 8 glycans. Phosphorylated on tyrosine residues; modestly increased after TCR/CD28 stimulation. Can be phosphorylated in the cytoplasmic domain by FYN (By similarity). Phosphorylation at Tyr-265 is increased by stimulation with ligand LGALS9.

Images

Short exposure Long exposure

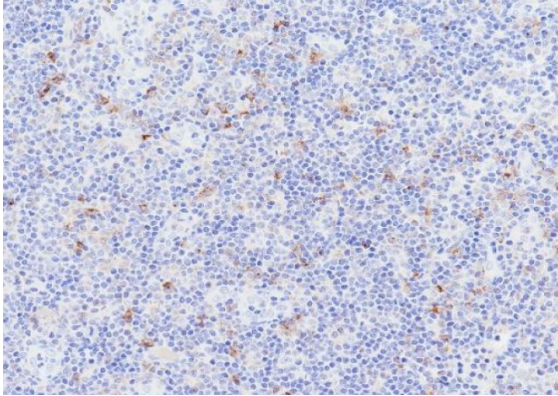
ARG66922 anti-TIM3 antibody [SQab22265] WB image (Customer's Feedback)

Western blot: NK92-MI; TIM3 KD NK92-MI and Primary T cell stained with ARG66922 anti-TIM3 antibody [SQab22265] at 1:2000 dilution for 1 hour at room temperature.



ARG66922 anti-TIM3 antibody [SQab22265] FACS image (Customer's Feedback)

Flow Cytometry: NK92-MI; TIM3 KD NK92-MI and Primary T cell stained with ARG66922 anti-TIM3 antibody [SQab22265] at 1:200 dilution for 50 min at 4°C.



ARG66922 anti-TIM3 antibody [SQab22265] IHC-P image

Immunohistochemistry: Formalin/PFA-fixed and paraffin-embedded sections of Human tonsil stained with ARG66922 anti-TIM3 antibody [SQab22265]. Antigen Retrieval: Heat tissue section in Tris-EDTA buffer (pH 9.0).