

ARG66926 anti-Collagen IV alpha 5 antibody [SQab22254]

Package: 100 µl, 50 µl
Store at: -20°C

Summary

Product Description	Recombinant Rabbit Monoclonal antibody [SQab22254] recognizes Collagen IV alpha 5
Tested Reactivity	Hu
Tested Application	IHC-P
Host	Rabbit
Clonality	Monoclonal
Clone	SQab22254
Isotype	IgG
Target Name	Collagen IV alpha 5
Species	Human
Immunogen	Recombinant fragment with COL4A5.
Conjugation	Un-conjugated
Alternate Names	ATS; ASLN; ATS1; CA54; Collagen alpha-5(IV) chain

Application Instructions

Application table	Application	Dilution
	IHC-P	1:100 - 1:200
Application Note	IHC-P: Antigen Retrieval: Heat mediated was performed using Tris/EDTA buffer (pH 9.0). Incubate the samples at RT (18-25°C) for 30 min. * The dilutions indicate recommended starting dilutions and the optimal dilutions or concentrations should be determined by the scientist.	
Positive Control	Human kidney tissue	

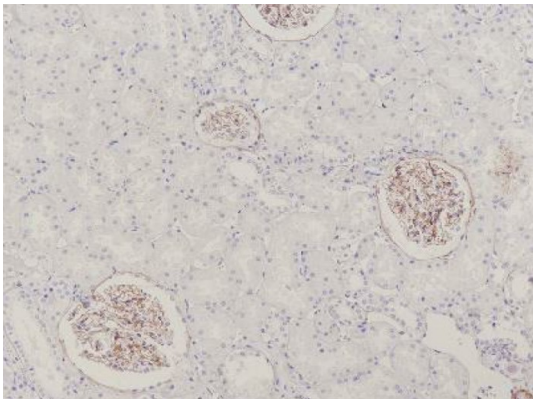
Properties

Form	Liquid
Purification	Purification with Protein A.
Buffer	PBS, 0.01% Sodium azide, 40% Glycerol and 0.05%BSA.
Preservative	0.01% Sodium azide
Stabilizer	40% Glycerol and 0.05%BSA
Storage instruction	For continuous use, store undiluted antibody at 2-8°C for up to a week. For long-term storage, aliquot and store at -20°C or below. Storage in frost free freezers is not recommended. Avoid repeated freeze/thaw cycles. Suggest spin the vial prior to opening. The antibody solution should be gently mixed before use.
Note	For laboratory research only, not for drug, diagnostic or other use.

Bioinformation

Gene Symbol	COL4A5
Gene Full Name	collagen type IV alpha 5 chain
Background	This gene encodes one of the six subunits of type IV collagen, the major structural component of basement membranes. Mutations in this gene are associated with X-linked Alport syndrome, also known as hereditary nephritis. Like the other members of the type IV collagen gene family, this gene is organized in a head-to-head conformation with another type IV collagen gene so that each gene pair shares a common promoter. Alternatively spliced transcript variants have been identified for this gene. [provided by RefSeq, Aug 2010]
Function	Type IV collagen is the major structural component of glomerular basement membranes (GBM), forming a 'chicken-wire' meshwork together with laminins, proteoglycans and entactin/nidogen. [UniProt]
Calculated Mw	161 kDa
PTM	Disulfide bond, Glycoprotein, Hydroxylation
Cellular Localization	Basement membrane, Extracellular matrix, Secreted. [UniProt]

Images



ARG66926 anti-Collagen IV alpha 5 antibody [SQab22254] IHC-P image

Immunohistochemistry: Formalin/PFA-fixed and paraffin-embedded sections of Human kidney tissue stained with ARG66926 anti-Collagen IV alpha 5 antibody [SQab22254]. Antigen Retrieval: Heat tissue section in Tris-EDTA buffer (pH 9.0).