

ARG66930 anti-CD223 / LAG3 antibody [SQab22258]

Package: 100 µl, 50 µl
Store at: -20°C

Summary

Product Description	Recombinant Rabbit Monoclonal antibody [SQab22258] recognizes CD223 / LAG3
Tested Reactivity	Hu
Tested Application	IHC-P
Host	Rabbit
Clonality	Monoclonal
Clone	SQab22258
Isotype	IgG
Target Name	CD223 / LAG3
Species	Human
Immunogen	Synthetic peptide within Human LAG-3.
Conjugation	Un-conjugated
Alternate Names	CD antigen CD223; CD223; Protein FDC; Lymphocyte activation gene 3 protein; LAG-3

Application Instructions

Application table	Application	Dilution
	IHC-P	1:100 - 1:200
Application Note	IHC-P: Antigen Retrieval: Heat mediated was performed using Tris/EDTA buffer (pH 9.0). Incubate the samples at RT (18-25°C) for 30 min. * The dilutions indicate recommended starting dilutions and the optimal dilutions or concentrations should be determined by the scientist.	
Positive Control	Human lymphoma tissue	

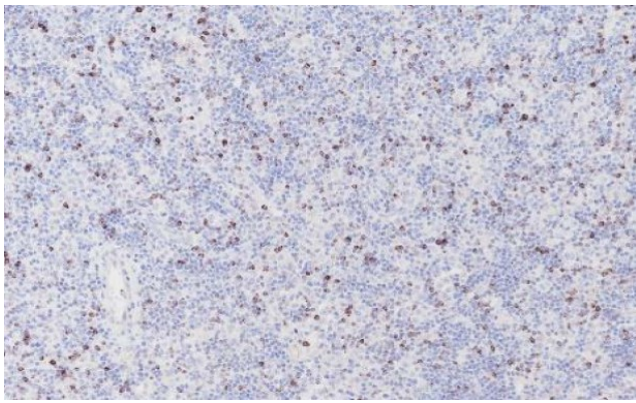
Properties

Form	Liquid
Purification	Purification with Protein A.
Buffer	PBS, 0.01% Sodium azide, 40% Glycerol and 0.05%BSA.
Preservative	0.01% Sodium azide
Stabilizer	40% Glycerol and 0.05%BSA
Storage instruction	For continuous use, store undiluted antibody at 2-8°C for up to a week. For long-term storage, aliquot and store at -20°C or below. Storage in frost free freezers is not recommended. Avoid repeated freeze/thaw cycles. Suggest spin the vial prior to opening. The antibody solution should be gently mixed before use.
Note	For laboratory research only, not for drug, diagnostic or other use.

Bioinformation

Gene Symbol	LAG3
Gene Full Name	lymphocyte-activation gene 3
Background	Lymphocyte-activation protein 3 belongs to Ig superfamily and contains 4 extracellular Ig-like domains. The LAG3 gene contains 8 exons. The sequence data, exon/intron organization, and chromosomal localization all indicate a close relationship of LAG3 to CD4. [provided by RefSeq, Jul 2008]
Function	Involved in lymphocyte activation. Binds to HLA class-II antigens. [UniProt]
Calculated Mw	57 kDa
Cellular Localization	Membrane, Single-pass type I membrane protein. [UniProt]

Images



ARG66930 anti-CD223 / LAG3 antibody [SQab22258] IHC-P image

Immunohistochemistry: Formalin/PFA-fixed and paraffin-embedded sections of Human lymphoma tissue stained with ARG66930 anti-CD223 / LAG3 antibody [SQab22258]. Antigen Retrieval: Heat tissue section in Tris-EDTA buffer (pH 9.0).