

ARG66932
anti-PHOX2B antibody [SQab22261]Package: 100 µl, 50 µl
Store at: -20°C

Summary

Product Description	Recombinant Rabbit Monoclonal antibody [SQab22261] recognizes PHOX2B
Tested Reactivity	Hu
Tested Application	IHC-P
Host	Rabbit
Clonality	Monoclonal
Clone	SQab22261
Isotype	IgG
Target Name	PHOX2B
Species	Human
Immunogen	Synthetic peptide of Human PHOX2B.
Conjugation	Un-conjugated
Alternate Names	NBPhox; PHOX2B homeodomain protein; Paired-like homeobox 2B; Neuroblastoma Phox; Paired mesoderm homeobox protein 2B; PMX2B; NBLST2

Application Instructions

Application table	Application	Dilution
	IHC-P	1:100 - 1:200
Application Note	IHC-P: Antigen Retrieval: Heat mediated was performed using Tris/EDTA buffer (pH 9.0). Incubate the samples at RT (18-25°C) for 30 min. * The dilutions indicate recommended starting dilutions and the optimal dilutions or concentrations should be determined by the scientist.	
Positive Control	Human neuroblastoma tissue	

Properties

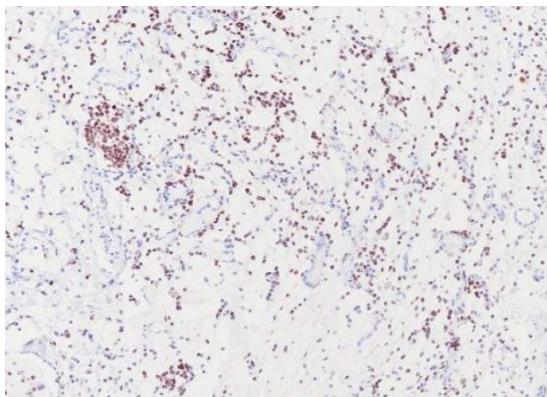
Form	Liquid
Purification	Purification with Protein A.
Buffer	PBS, 0.01% Sodium azide, 40% Glycerol and 0.05%BSA.
Preservative	0.01% Sodium azide
Stabilizer	40% Glycerol and 0.05%BSA
Storage instruction	For continuous use, store undiluted antibody at 2-8°C for up to a week. For long-term storage, aliquot and store at -20°C or below. Storage in frost free freezers is not recommended. Avoid repeated freeze/thaw cycles. Suggest spin the vial prior to opening. The antibody solution should be gently mixed before use.

Note For laboratory research only, not for drug, diagnostic or other use.

Bioinformation

Gene Symbol	PHOX2B
Gene Full Name	paired-like homeobox 2b
Background	The DNA-associated protein encoded by this gene is a member of the paired family of homeobox proteins localized to the nucleus. The protein functions as a transcription factor involved in the development of several major noradrenergic neuron populations and the determination of neurotransmitter phenotype. The gene product is linked to enhancement of second messenger-mediated activation of the dopamine beta-hydroxylase, c-fos promoters and several enhancers, including cyclic amp-response element and serum-response element. [provided by RefSeq, Jul 2008]
Function	Involved in the development of several major noradrenergic neuron populations, including the locus coeruleus. Transcription factor which could determine a neurotransmitter phenotype in vertebrates. Enhances second-messenger-mediated activation of the dopamine beta-hydroxylase and c-fos promoters, and of several enhancers including cAMP-response element and serum-response element. [UniProt]
Calculated Mw	32 kDa
Cellular Localization	Nucleus. [UniProt]

Images



ARG66932 anti-PHOX2B antibody [SQab22261] IHC-P image

Immunohistochemistry: Formalin/PFA-fixed and paraffin-embedded sections of Human neuroblastoma tissue stained with ARG66932 anti-PHOX2B antibody [SQab22261]. Antigen Retrieval: Heat tissue section in Tris-EDTA buffer (pH 9.0).