

ARG66942 anti-NUT / NUTM1 antibody [SQab22272]

Package: 100 µl, 50 µl
Store at: -20°C

Summary

Product Description	Recombinant Rabbit Monoclonal antibody [SQab22272] recognizes NUT / NUTM1
Tested Reactivity	Hu
Tested Application	IHC-P
Host	Rabbit
Clonality	Monoclonal
Clone	SQab22272
Isotype	IgG
Target Name	NUT / NUTM1
Species	Human
Immunogen	A synthetic peptide corresponding to the sequence of Human NUT / NUTM1.
Conjugation	Un-conjugated
Alternate Names	NUT; FAM22H; C15orf55; Nuclear protein in testis; NUT family member 1

Application Instructions

Application table	<table><thead><tr><th>Application</th><th>Dilution</th></tr></thead><tbody><tr><td>IHC-P</td><td>1:100 - 1:200</td></tr></tbody></table>	Application	Dilution	IHC-P	1:100 - 1:200
Application	Dilution				
IHC-P	1:100 - 1:200				
Application Note	IHC-P: Antigen Retrieval: Heat mediated was performed using Tris/EDTA buffer (pH 9.0). Incubate the samples at RT (18-25°C) for 30 min. * The dilutions indicate recommended starting dilutions and the optimal dilutions or concentrations should be determined by the scientist.				
Positive Control	Human testis tissue				

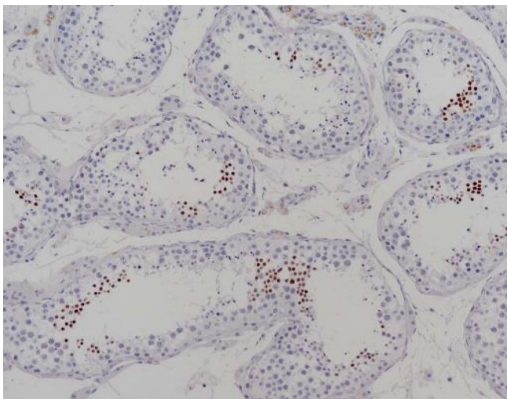
Properties

Form	Liquid
Purification	Purification with Protein A.
Buffer	PBS, 0.01% Sodium azide, 40% Glycerol and 0.05%BSA.
Preservative	0.01% Sodium azide
Stabilizer	40% Glycerol and 0.05%BSA
Storage instruction	For continuous use, store undiluted antibody at 2-8°C for up to a week. For long-term storage, aliquot and store at -20°C or below. Storage in frost free freezers is not recommended. Avoid repeated freeze/thaw cycles. Suggest spin the vial prior to opening. The antibody solution should be gently mixed before use.
Note	For laboratory research only, not for drug, diagnostic or other use.

Bioinformation

Gene Symbol	NUTM1
Gene Full Name	NUT midline carcinoma family member 1
Background	Predicted to be located in cytoplasm and nucleus. [provided by Alliance of Genome Resources, Apr 2022]
Function	Plays a role in the regulation of proliferation. Regulates TERT expression by modulating SP1 binding to TERT promoter binding sites. [provide by uniprot]
Calculated Mw	120.3 kDa
PTM	Methylation, Phosphoprotein; Methylated at Gln-1046 by N6AMT1.1 Phosphorylation on Ser-1026, Ser-1029 or Ser-1031 is important for cytoplasmic export.
Cellular Localization	Cytoplasm, Nucleus

Images



ARG66942 anti-NUT / NUTM1 antibody [SQab22272] IHC-P image

Immunohistochemistry: Formalin/PFA-fixed and paraffin-embedded sections of Human testis tissue stained with ARG66942 anti-NUT / NUTM1 antibody [SQab22272]. Antigen Retrieval: Heat tissue section in Tris-EDTA buffer (pH 9.0).