

ARG66943 anti-ROS1 antibody [SQab22273]

Package: 50 µl
Store at: -20°C

Summary

Product Description	Recombinant Rabbit Monoclonal antibody [SQab22273] recognizes ROS1
Tested Reactivity	Hu
Tested Application	IHC-P
Host	Rabbit
Clonality	Monoclonal
Clone	SQab22273
Isotype	IgG
Target Name	ROS1
Species	Human
Immunogen	Recombinant protein fragment of Human ROS1.
Conjugation	Un-conjugated
Alternate Names	Proto-oncogene c-Ros-1; MCF3; c-ros-1; Receptor tyrosine kinase c-ros oncogene 1; Proto-oncogene tyrosine-protein kinase ROS; c-Ros receptor tyrosine kinase; ROS; EC 2.7.10.1; Proto-oncogene c-Ros

Application Instructions

Application table	<table><thead><tr><th>Application</th><th>Dilution</th></tr></thead><tbody><tr><td>IHC-P</td><td>1:100 - 1:200</td></tr></tbody></table>	Application	Dilution	IHC-P	1:100 - 1:200
Application	Dilution				
IHC-P	1:100 - 1:200				
Application Note	IHC-P: Antigen Retrieval: Heat mediated was performed using Tris/EDTA buffer (pH 9.0). Incubate the samples at RT (18-25°C) for 30 min. * The dilutions indicate recommended starting dilutions and the optimal dilutions or concentrations should be determined by the scientist.				
Positive Control	Human ROS1+ lung carcinoma tissue				

Properties

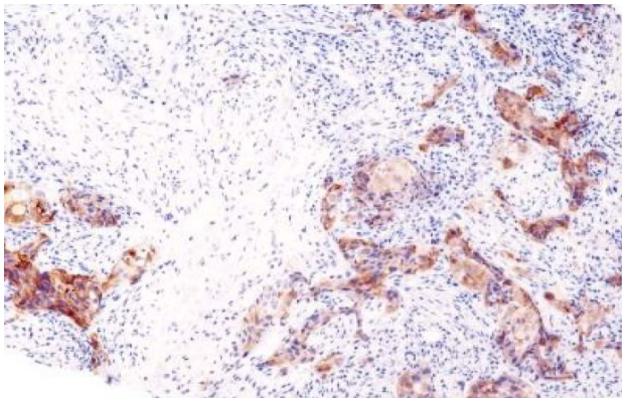
Form	Liquid
Purification	Purification with Protein A.
Buffer	PBS, 0.01% Sodium azide, 40% Glycerol and 0.05%BSA.
Preservative	0.01% Sodium azide
Stabilizer	40% Glycerol and 0.05%BSA
Storage instruction	For continuous use, store undiluted antibody at 2-8°C for up to a week. For long-term storage, aliquot and store at -20°C or below. Storage in frost free freezers is not recommended. Avoid repeated freeze/thaw cycles. Suggest spin the vial prior to opening. The antibody solution should be gently mixed before use.

Note For laboratory research only, not for drug, diagnostic or other use.

Bioinformation

Gene Symbol	ROS1
Gene Full Name	ROS proto-oncogene 1 , receptor tyrosine kinase
Background	This proto-oncogene, highly-expressed in a variety of tumor cell lines, belongs to the sevenless subfamily of tyrosine kinase insulin receptor genes. The protein encoded by this gene is a type I integral membrane protein with tyrosine kinase activity. The protein may function as a growth or differentiation factor receptor. [provided by RefSeq, Jul 2008]
Function	Orphan receptor tyrosine kinase (RTK) that plays a role in epithelial cell differentiation and regionalization of the proximal epididymal epithelium. May activate several downstream signaling pathways related to cell differentiation, proliferation, growth and survival including the PI3 kinase-mTOR signaling pathway. Mediates the phosphorylation of PTPN11, an activator of this pathway. May also phosphorylate and activate the transcription factor STAT3 to control anchorage-independent cell growth. Mediates the phosphorylation and the activation of VAV3, a guanine nucleotide exchange factor regulating cell morphology. May activate other downstream signaling proteins including AKT1, MAPK1, MAPK3, IRS1 and PLCG2. [UniProt]
Research Area	Cancer antibody; Gene Regulation antibody; Signaling Transduction antibody
Calculated Mw	264 kDa
PTM	Phosphorylated. Probably autophosphorylates. Phosphorylation at Tyr-2274 is required for the interaction with PTPN6 that mediates ROS1 dephosphorylation (By similarity). Phosphorylation at Tyr-2274 stimulates the kinase activity and the activation of the ERK1 signaling cascade (By similarity). Phosphorylation at Tyr-2274 and/or Tyr-2334 recruits PTPN11.
Cellular Localization	Cell membrane; Single-pass type I membrane protein

Images



ARG66943 anti-ROS1 antibody [SQab22273] IHC-P image

Immunohistochemistry: Formalin/PFA-fixed and paraffin-embedded sections of Human ROS1+ lung carcinoma tissue stained with ARG66943 anti-ROS1 antibody [SQab22273]. Antigen Retrieval: Heat tissue section in Tris-EDTA buffer (pH 9.0).