

ARG66945 anti-TLE1 antibody [SQab22275]

Package: 100 µl, 50 µl
Store at: -20°C

Summary

Product Description	Recombinant Rabbit Monoclonal antibody [SQab22275] recognizes TLE1
Tested Reactivity	Hu
Tested Application	IHC-P
Host	Rabbit
Clonality	Monoclonal
Clone	SQab22275
Isotype	IgG
Target Name	TLE1
Species	Human
Immunogen	Full length protein corresponding to Human TLE1.
Conjugation	Un-conjugated
Alternate Names	ESG; ESG1; GRG1; TLE-1; Enhancer of split groucho-like protein 1; E(Sp1) homolog; Transducin-like enhancer protein 1

Application Instructions

Application table	Application	Dilution
	IHC-P	1:100 - 1:200
Application Note	IHC-P: Antigen Retrieval: Heat mediated was performed using Tris/EDTA buffer (pH 9.0). Incubate the samples at RT (18-25°C) for 30 min. * The dilutions indicate recommended starting dilutions and the optimal dilutions or concentrations should be determined by the scientist.	
Positive Control	Human synovial sarcoma	

Properties

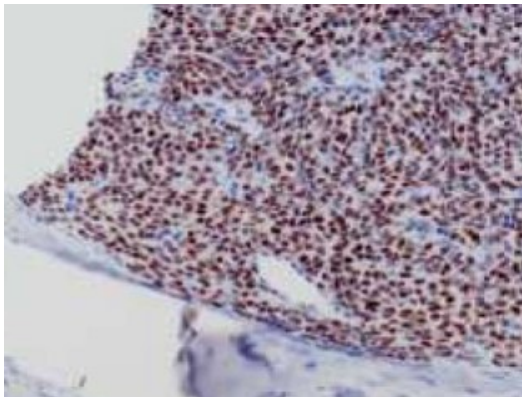
Form	Liquid
Purification	Purification with Protein A.
Buffer	PBS, 0.01% Sodium azide, 40% Glycerol and 0.05%BSA.
Preservative	0.01% Sodium azide
Stabilizer	40% Glycerol and 0.05%BSA
Storage instruction	For continuous use, store undiluted antibody at 2-8°C for up to a week. For long-term storage, aliquot and store at -20°C or below. Storage in frost free freezers is not recommended. Avoid repeated freeze/thaw cycles. Suggest spin the vial prior to opening. The antibody solution should be gently mixed before use.

Note For laboratory research only, not for drug, diagnostic or other use.

Bioinformation

Gene Symbol	TLE1
Gene Full Name	TLE family member 1, transcriptional corepressor
Background	Enables identical protein binding activity and transcription corepressor activity. Involved in negative regulation of I-kappaB kinase/NF-kappaB signaling; negative regulation of anoikis; and regulation of gene expression. Located in cytosol and nucleoplasm. Part of beta-catenin-TCF complex. [provided by Alliance of Genome Resources, Apr 2022]
Function	Transcriptional corepressor that binds to a number of transcription factors. Inhibits NF-kappa-B-regulated gene expression. Inhibits the transcriptional activation mediated by FOXA2, and by CTNNB1 and TCF family members in Wnt signaling. Enhances FOXG1/BF-1- and HES1-mediated transcriptional repression (By similarity). The effects of full-length TLE family members may be modulated by association with dominant-negative AES. Unusual function as coactivator for ESRRG.
Calculated Mw	83.2 kDa
PTM	Phosphoprotein, Ubl conjugation
Cellular Localization	Nucleus

Images



ARG66945 anti-TLE1 antibody [SQab22275] IHC-P image

Immunohistochemistry: Formalin/PFA-fixed and paraffin-embedded sections of Human synovial sarcoma stained with ARG66945 anti-TLE1 antibody [SQab22275]. Antigen Retrieval: Heat tissue section in Tris-EDTA buffer (pH 9.0).