

ARG66962 anti-Cyclin A2 antibody

Package: 100 µl
Store at: -20°C

Summary

Product Description	Rabbit Polyclonal antibody recognizes Cyclin A2
Tested Reactivity	Hu, Ms
Tested Application	ICC/IF, IHC-P, WB
Host	Rabbit
Clonality	Polyclonal
Isotype	IgG
Target Name	Cyclin A2
Species	Human
Immunogen	Synthetic peptide around the C-terminal region of Human Cyclin A2.
Conjugation	Un-conjugated
Alternate Names	Cyclin-A2; Cyclin-A; CCN1; CCNA

Application Instructions

Application table	Application	Dilution
	ICC/IF	1:200 - 1:500
	IHC-P	1:100 - 1:200
	WB	1:500 - 1:1000
Application Note	* The dilutions indicate recommended starting dilutions and the optimal dilutions or concentrations should be determined by the scientist.	
Positive Control	293T; HuVEC; T24; LNCaP; Human gastric carcinoma	
Observed Size	~55 kDa	

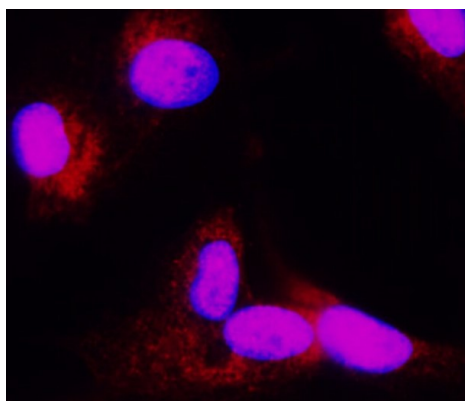
Properties

Form	Liquid
Purification	Affinity purified.
Buffer	100 mM Tris Glycine (pH 7.0), 0.025% ProClin 300 and 20% Glycerol.
Preservative	0.025% ProClin 300
Stabilizer	20% Glycerol
Storage instruction	For continuous use, store undiluted antibody at 2-8°C for up to a week. For long-term storage, aliquot and store at -20°C. Storage in frost free freezers is not recommended. Avoid repeated freeze/thaw cycles. Suggest spin the vial prior to opening. The antibody solution should be gently mixed before use.

Bioinformation

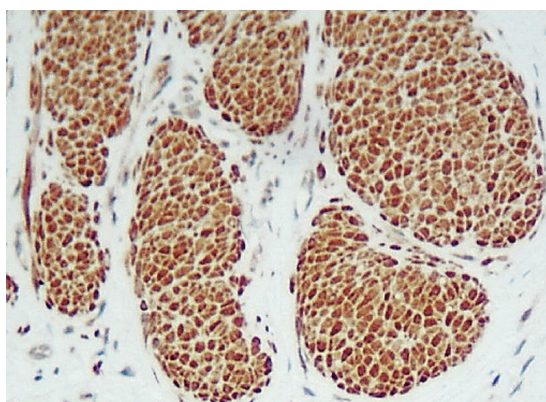
Gene Symbol	CCNA2
Gene Full Name	cyclin A2
Background	The protein encoded by this gene belongs to the highly conserved cyclin family, whose members are characterized by a dramatic periodicity in protein abundance through the cell cycle. Cyclins function as regulators of CDK kinases. Different cyclins exhibit distinct expression and degradation patterns which contribute to the temporal coordination of each mitotic event. In contrast to cyclin A1, which is present only in germ cells, this cyclin is expressed in all tissues tested. This cyclin binds and activates CDC2 or CDK2 kinases, and thus promotes both cell cycle G1/S and G2/M transitions. [provided by RefSeq, Jul 2008]
Function	Essential for the control of the cell cycle at the G1/S (start) and the G2/M (mitosis) transitions. [UniProt]
Research Area	Cancer antibody; Cell Biology and Cellular Response antibody; Gene Regulation antibody
Calculated Mw	49 kDa
PTM	Polyubiquitinated via 'Lys-11'-linked ubiquitin by the anaphase-promoting complex (APC/C), leading to its degradation by the proteasome. Deubiquitinated and stabilized by USP37 enables entry into S phase.

Images



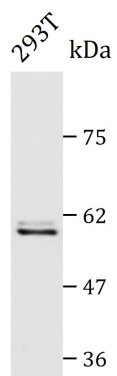
ARG66962 anti-Cyclin A2 antibody ICC/IF image

Immunofluorescence: HuVEC cells were fixed with 4% paraformaldehyde at RT for 10 min, permeabilized with 0.1% NP-40 at RT for 10 min and then cells were blocked with 5% BSA at RT for 30 min and stained with ARG66962 anti-Cyclin A2 antibody (red) at 1:200 dilution at 4°C for overnight. DAPI (blue) was used for nuclear staining.



ARG66962 anti-Cyclin A2 antibody IHC-P image

Immunohistochemistry: Paraffin-embedded Human gastric carcinoma tissue stained with ARG66962 anti-Cyclin A2 antibody at 1:100 dilution.



ARG66962 anti-Cyclin A2 antibody WB image

Western blot: 50 µg of 293T cell lysate stained with ARG66962 anti-Cyclin A2 antibody at 1:1000 dilution, overnight at 4°C.