

## ARG66976 anti-CD62L / L-Selectin antibody

Package: 100 µl  
Store at: -20°C

### Summary

Product Description	Rabbit Polyclonal antibody recognizes CD62L / L-Selectin
Tested Reactivity	Hu, Ms
Predict Reactivity	Rat
Tested Application	FACS, ICC/IF, IHC-P
Host	Rabbit
Clonality	Polyclonal
Isotype	IgG
Target Name	CD62L / L-Selectin
Species	Human
Immunogen	Synthetic peptide corresponding to the extracellular domain of CD62L / L-Selectin.
Conjugation	Un-conjugated
Alternate Names	Leukocyte surface antigen Leu-8; Leukocyte adhesion molecule 1; CD antigen CD62L; PLNHR; LSEL; CD62L; Leukocyte-endothelial cell adhesion molecule 1; L-selectin; LAM1; LNHR; TQ1; CD62 antigen-like family member L; gp90-MEL; Lymph node homing receptor; LYAM1; LECAM1; LEU8; LAM-1

### Application Instructions

Application table	Application	Dilution
	FACS	Assay-dependent
	ICC/IF	1:200 - 1:500
	IHC-P	1:100 - 1:300
	Application Note	* The dilutions indicate recommended starting dilutions and the optimal dilutions or concentrations should be determined by the scientist.
Positive Control	Leukocyte; Uterus	

### Properties

Form	Liquid
Purification	Affinity purified.
Buffer	100 mM Tris Glycine (pH 7.0), 0.025% ProClin 300 and 20% Glycerol.
Preservative	0.025% ProClin 300
Stabilizer	20% Glycerol
Storage instruction	For continuous use, store undiluted antibody at 2-8°C for up to a week. For long-term storage, aliquot and store at -20°C or below. Storage in frost free freezers is not recommended. Avoid repeated freeze/thaw cycles. Suggest spin the vial prior to opening. The antibody solution should be gently mixed

before use.

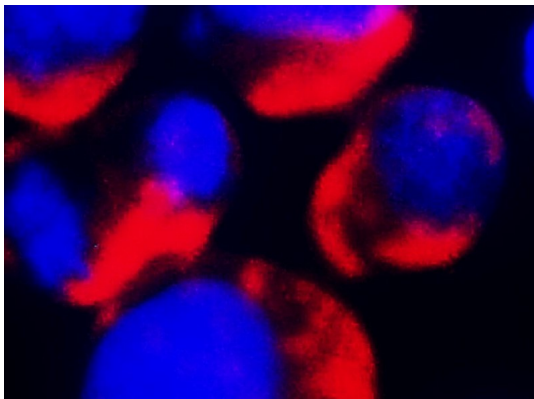
Note

For laboratory research only, not for drug, diagnostic or other use.

## Bioinformation

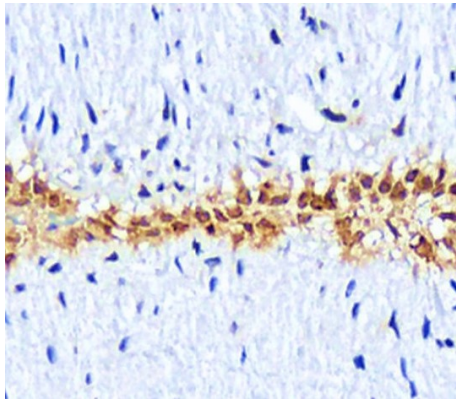
Gene Symbol	SELL
Gene Full Name	selectin L
Background	CD62L (L-selectin) is an adhesion glycoprotein that is constitutively expressed on the cell surface of leukocytes and mediates their homing to inflammatory sites and peripheral lymph nodes by enabling rolling along the venular wall. CD62L is also involved in activation-induced neutrophil aggregation. Activation-dependent CD62L shedding, however, counteracts neutrophil rolling. CD62L has also signaling roles including enhance of chemokine receptor expression. Similarly to CD62P, the major ligand of CD62L is PSGL-1 (P-selectin glycoprotein ligand-1). The level of CD62L expression can be used to help distinguish naive T cells from effector/memory T cells.
Function	Cell surface adhesion protein. Mediates the adherence of lymphocytes to endothelial cells of high endothelial venules in peripheral lymph nodes. Promotes initial tethering and rolling of leukocytes in endothelia. [UniProt]
Highlight	Related products: <a href="#">CD62L antibodies</a> ; <a href="#">CD62L ELISA Kits</a> ; <a href="#">Anti-Rabbit IgG secondary antibodies</a> ; Related news: <a href="#">CyTOF-candidate Antibodies</a>
Research Area	Cell Biology and Cellular Response antibody; Developmental Biology antibody; Immune System antibody; Signaling Transduction antibody
Calculated Mw	42 kDa

## Images



ARG66976 anti-CD62L / L-Selectin antibody ICC/IF image

Immunofluorescence: Jurkat cells were fixed with 4% paraformaldehyde at RT for 10 min, permeabilized with 0.1% NP-40 at RT for 10 min and then cells were blocked with 5% BSA at RT for 30 min and stained with ARG66976 anti-CD62L / L-Selectin antibody (red) at 1:200 dilution at 4°C for overnight. DAPI (blue) was used for nuclear staining.



**ARG66976 anti-CD62L / L-Selectin antibody IHC-P image**

Immunohistochemistry: Paraffin-embedded Human tissue stained with ARG66976 anti-CD62L / L-Selectin antibody at 1:100 dilution. Antigen Retrieval: Boil tissue section in Citrate buffer (pH 6.0).