

ARG66993 anti-ZEB1 antibody

Package: 100 µl
Store at: -20°C

Summary

Product Description	Rabbit Polyclonal antibody recognizes ZEB1
Tested Reactivity	Hu, Ms
Predict Reactivity	Rat
Tested Application	ICC/IF, WB
Host	Rabbit
Clonality	Polyclonal
Isotype	IgG
Target Name	ZEB1
Species	Human
Immunogen	Synthetic peptide around the middle region of Human ZEB1.
Conjugation	Un-conjugated
Alternate Names	Transcription factor 8; DELTAEF1; PPCD3; TCF-8; AREB6; BZP; TCF8; NIL-2-A zinc finger protein; FECD6; NIL2A; Zinc finger E-box-binding homeobox 1; Negative regulator of IL2; ZFHX1A; ZFHEP

Application Instructions

Application table	Application	Dilution
	ICC/IF	1:50–1:300
	WB	1:200 - 1:500
Application Note	* The dilutions indicate recommended starting dilutions and the optimal dilutions or concentrations should be determined by the scientist.	

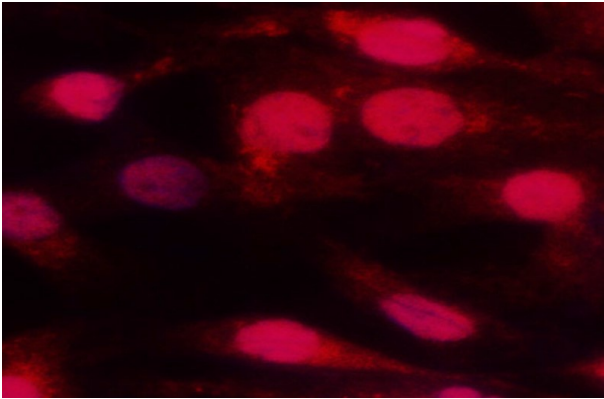
Properties

Form	Liquid
Purification	Affinity purified.
Buffer	100 mM Tris Glycine (pH 7.0), 0.025% ProClin 300 and 20% Glycerol.
Preservative	0.025% ProClin 300
Stabilizer	20% Glycerol
Storage instruction	For continuous use, store undiluted antibody at 2-8°C for up to a week. For long-term storage, aliquot and store at -20°C. Storage in frost free freezers is not recommended. Avoid repeated freeze/thaw cycles. Suggest spin the vial prior to opening. The antibody solution should be gently mixed before use.
Note	For laboratory research only, not for drug, diagnostic or other use.

Bioinformation

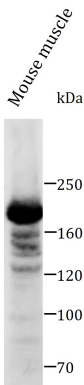
Gene Symbol	ZEB1
Gene Full Name	zinc finger E-box binding homeobox 1
Background	This gene encodes a zinc finger transcription factor. The encoded protein likely plays a role in transcriptional repression of interleukin 2. Mutations in this gene have been associated with posterior polymorphous corneal dystrophy-3 and late-onset Fuchs endothelial corneal dystrophy. Alternatively spliced transcript variants encoding different isoforms have been described. [provided by RefSeq, Mar 2010]
Function	Acts as a transcriptional repressor. Inhibits interleukin-2 (IL-2) gene expression. Enhances or represses the promoter activity of the ATP1A1 gene depending on the quantity of cDNA and on the cell type. Represses E-cadherin promoter and induces an epithelial-mesenchymal transition (EMT) by recruiting SMARCA4/BRG1. Represses BCL6 transcription in the presence of the corepressor CTBP1. Positively regulates neuronal differentiation. Represses RCOR1 transcription activation during neurogenesis. Represses transcription by binding to the E box (5'-CANNTG-3'). Promotes tumorigenicity by repressing stemness-inhibiting microRNAs. [UniProt]
Calculated Mw	124 kDa
Cellular Localization	Nucleus. [UniProt]

Images



ARG66993 anti-ZEB1 antibody ICC/IF image

Immunofluorescence: 4% paraformaldehyde-fixed MDAMB-231 cells were permeabilized with 0.1% NP-40 for 5-10 minutes and blocked with 5% BSA for 30 minutes at room temperature. Cells were stained with ARG66993 anti-ZEB1 antibody at 1:200 dilution.



ARG66993 anti-ZEB1 antibody WB image

Western blot: Mouse muscle tissue stained with ARG66993 anti-ZEB1 antibody at 1:500 dilution.