

## ARG67022 anti-SLC4A11 / BTR1 antibody

Package: 100 µl  
Store at: -20°C

### Summary

Product Description	Rabbit Polyclonal antibody recognizes SLC4A11 / BTR1
Tested Reactivity	Hu, Ms
Predict Reactivity	Rat
Tested Application	WB
Host	Rabbit
Clonality	Polyclonal
Isotype	IgG
Target Name	SLC4A11 / BTR1
Species	Human
Immunogen	Synthetic peptide corresponding to aa. 291-340 of Human SLC4A11 / BTR1.
Conjugation	Un-conjugated
Alternate Names	Sodium borate cotransporter 1; NaBC1; Sodium bicarbonate transporter-like protein 11; NABC1; Solute carrier family 4 member 11; CHED2; CDPD1; BTR1; dJ794I6.2; Bicarbonate transporter-related protein 1

### Application Instructions

Application table	Application	Dilution
	WB	1:500 - 1:2000
Application Note	* The dilutions indicate recommended starting dilutions and the optimal dilutions or concentrations should be determined by the scientist.	
Positive Control	A549 and Raw264.7	
Observed Size	100 kDa	

### Properties

Form	Liquid
Purification	Affinity purification with immunogen.
Buffer	PBS, 0.02% Sodium azide, 0.5% BSA and 50% Glycerol.
Preservative	0.02% Sodium azide
Stabilizer	0.5% BSA and 50% Glycerol
Concentration	1 mg/ml
Storage instruction	For continuous use, store undiluted antibody at 2-8°C for up to a week. For long-term storage, aliquot and store at -20°C or below. Storage in frost free freezers is not recommended. Avoid repeated freeze/thaw cycles. Suggest spin the vial prior to opening. The antibody solution should be gently mixed before use.

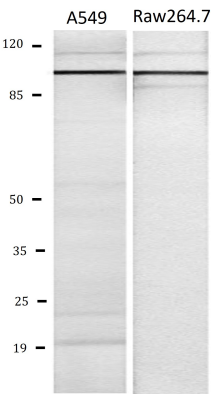
Note

For laboratory research only, not for drug, diagnostic or other use.

Bioinformation

Gene Symbol	SLC4A11
Gene Full Name	solute carrier family 4 member 11
Background	This gene encodes a voltage-regulated, electrogenic sodium-coupled borate cotransporter that is essential for borate homeostasis, cell growth and cell proliferation. Mutations in this gene have been associated with a number of endothelial corneal dystrophies including recessive corneal endothelial dystrophy 2, corneal dystrophy and perceptive deafness, and Fuchs endothelial corneal dystrophy. Multiple transcript variants encoding different isoforms have been described. [provided by RefSeq, Mar 2010]
Research Area	Metabolism antibody; Neuroscience antibody; Signaling Transduction antibody
Calculated Mw	100 kDa
PTM	Glycosylated.

Images



ARG67022 anti-SLC4A11 / BTR1 antibody WB image

Western Blot: A549 and Raw264.7 cell lysate stained with ARG67022 anti-SLC4A11 / BTR1 antibody.