

## ARG67023 anti-UTRN / Utrophin antibody

Package: 100 µl  
Store at: -20°C

### Summary

Product Description	Rabbit Polyclonal antibody recognizes UTRN / Utrophin
Tested Reactivity	Hu
Tested Application	IHC-P
Host	Rabbit
Clonality	Polyclonal
Isotype	IgG
Target Name	UTRN / Utrophin
Species	Human
Immunogen	Synthetic peptide corresponding to a region of Human UTRN / Utrophin.
Conjugation	Un-conjugated
Alternate Names	Utrophin; DRP1; DMDL; DRP; Dystrophin-Related Protein; Utrophin (Homologous To Dystrophin); DRP-1

### Application Instructions

Application table	Application	Dilution
	IHC-P	1:50 - 1:300
Application Note	IHC-P: Antigen retrieval: boil tissue sections in 10 mM citrate buffer (pH 6.0) for 10-20 min and allow samples to cool to RT before staining. * The dilutions indicate recommended starting dilutions and the optimal dilutions or concentrations should be determined by the scientist.	

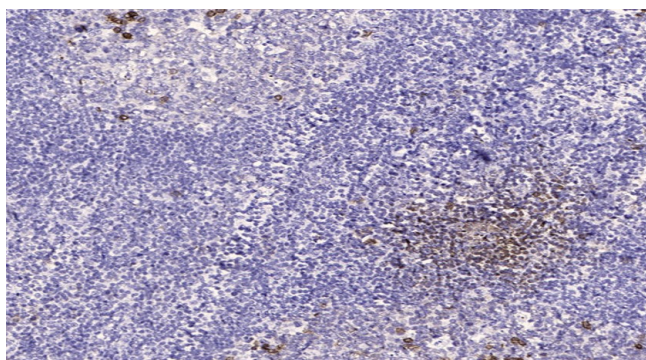
### Properties

Form	Liquid
Purification	Affinity purification with immunogen.
Buffer	PBS, 0.02% Sodium azide and 50% Glycerol.
Preservative	0.02% Sodium azide
Stabilizer	50% Glycerol
Concentration	1 mg/ml
Storage instruction	For continuous use, store undiluted antibody at 2-8°C for up to a week. For long-term storage, aliquot and store at -20°C. Storage in frost free freezers is not recommended. Avoid repeated freeze/thaw cycles. Suggest spin the vial prior to opening. The antibody solution should be gently mixed before use.
Note	For laboratory research only, not for drug, diagnostic or other use.

## Bioinformation

Gene Symbol	UTRN
Gene Full Name	utrophin
Background	<p>This gene shares both structural and functional similarities with the dystrophin gene. It contains an actin-binding N-terminus, a triple coiled-coil repeat central region, and a C-terminus that consists of protein-protein interaction motifs which interact with dystroglycan protein components. The protein encoded by this gene is located at the neuromuscular synapse and myotendinous junctions, where it participates in post-synaptic membrane maintenance and acetylcholine receptor clustering. Mouse studies suggest that this gene may serve as a functional substitute for the dystrophin gene and therefore, may serve as a potential therapeutic alternative to muscular dystrophy which is caused by mutations in the dystrophin gene. Alternative splicing of the utrophin gene has been described; however, the full-length nature of these variants has not yet been determined. [provided by RefSeq, Jul 2008]</p>
Function	May play a role in anchoring the cytoskeleton to the plasma membrane. [UniProt]
Calculated Mw	395 kDa
PTM	Phosphoprotein; Showing features for chain, modified residue. [UniProt]
Cellular Localization	Cell membrane; Cytoplasm; Cytoskeleton; Membrane; Postsynaptic cell membrane; Synapse. [UniProt]

## Images



ARG67023 anti-UTRN / Utrrophin antibody IHC-P image

Immunohistochemistry: Paraffin-embedded Human tonsil tissue was stained with ARG67023 anti-UTRN / Utrrophin antibody at 1:200 dilution. Antigen Retrieval: Boil tissue section in Tris-EDTA (pH 9.0) for 20 min.