

ARG67027 anti-alpha Fetoprotein antibody [SQab30312]

Package: 100 µl
Store at: -20°C

Summary

Product Description	Recombinant rabbit Monoclonal antibody [SQab30312] recognizes alpha Fetoprotein
Tested Reactivity	Hu
Tested Application	IHC-P
Host	Rabbit
Clonality	Monoclonal
Clone	SQab30312
Isotype	IgG
Target Name	alpha Fetoprotein
Species	Human
Immunogen	Synthetic peptide of Human alpha Fetoprotein.
Conjugation	Un-conjugated
Alternate Names	AFP, Alpha Fetoprotein, Alpha-Fetoprotein, HPAFP , FETA, Alpha-1-Fetoprotein, Alpha-Fetoglobulin, AFPD

Application Instructions

Application table	Application	Dilution
	IHC-P	1:50 - 1:100
Application Note	The dilutions indicate recommended starting dilutions and the optimal dilutions or concentrations should be determined by the scientist.	
Positive Control	Hepatocellular carcinoma	

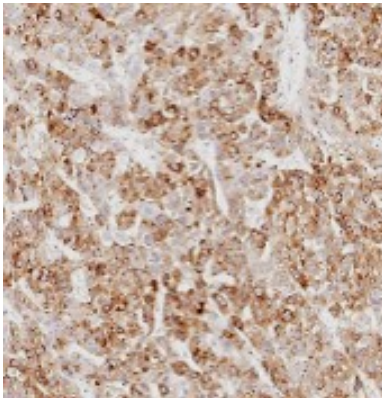
Properties

Form	Liquid
Purification	Purification with Protein A.
Buffer	PBS, 0.01% Sodium azide, 40% Glycerol and 0.05%BSA.
Preservative	0.01% Sodium azide
Stabilizer	40% Glycerol and 0.05%BSA
Storage instruction	For continuous use, store undiluted antibody at 2-8°C for up to a week. For long-term storage, aliquot and store at -20°C or below. Storage in frost free freezers is not recommended. Avoid repeated freeze/thaw cycles. Suggest spin the vial prior to opening. The antibody solution should be gently mixed before use.
Note	For laboratory research only, not for drug, diagnostic or other use.

Bioinformation

Gene Symbol	AFP
Gene Full Name	Alpha Fetoprotein
Background	This gene encodes alpha-fetoprotein, a major plasma protein produced by the yolk sac and the liver during fetal life. Alpha-fetoprotein expression in adults is often associated with hepatocarcinoma and with teratoma, and has prognostic value for managing advanced gastric cancer. However, hereditary persistence of alpha-fetoprotein may also be found in individuals with no obvious pathology. The protein is thought to be the fetal counterpart of serum albumin, and the alpha-fetoprotein and albumin genes are present in tandem in the same transcriptional orientation on chromosome 4. Alpha-fetoprotein is found in monomeric as well as dimeric and trimeric forms, and binds copper, nickel, fatty acids and bilirubin. The level of alpha-fetoprotein in amniotic fluid is used to measure renal loss of protein to screen for spina bifida and anencephaly. [provided by RefSeq, Oct 2019]
Function	Binds copper, nickel, and fatty acids as well as, and bilirubin less well than, serum albumin. Only a small percentage (less than 2%) of the human AFP shows estrogen-binding properties. [Uniprot]
Calculated Mw	69 kDa
PTM	Independent studies suggest heterogeneity of the N-terminal sequence of the mature protein and of the cleavage site of the signal sequence. [Uniprot]
Cellular Localization	Secreted

Images



ARG67027 anti-alpha Fetoprotein antibody [SQab30312] IHC-P image

Immunohistochemistry: Formalin-fixed and paraffin-embedded hepatocellular carcinoma stained with ARG67027 anti-alpha Fetoprotein antibody [SQab30312].