

## ARG67043 anti-PRAME antibody [SQab30314]

Package: 100 µl  
Store at: -20°C

### Summary

Product Description	Recombinant rabbit Monoclonal antibody [SQab30314] recognizes PRAME
Tested Reactivity	Hu
Tested Application	IHC-P
Host	Rabbit
Clonality	Monoclonal
Clone	SQab30314
Isotype	IgG
Target Name	PRAME
Species	Human
Immunogen	Recombinant protein of Human PRAME.
Conjugation	Un-conjugated
Alternate Names	PRAME, PRAME Nuclear Receptor Transcriptional Regulator, CT130, MAPE, Melanoma Antigen Preferentially Expressed In Tumors, Preferentially Expressed Antigen In Melanoma, Preferentially Expressed Antigen Of Melanoma, Cancer/Testis Antigen 130, Opa-Interacting Protein 4, OIP-4, OIP4, Opa-Interacting Protein OIP4

### Application Instructions

Application table	Application	Dilution
	IHC-P	1:50 - 1:100
Application Note	The dilutions indicate recommended starting dilutions and the optimal dilutions or concentrations should be determined by the scientist.	
Positive Control	Human malignant melanoma	

### Properties

Form	Liquid
Purification	Purification with Protein A.
Buffer	PBS, 0.01% Sodium azide, 40% Glycerol and 0.05%BSA.
Preservative	0.01% Sodium azide
Stabilizer	40% Glycerol and 0.05%BSA
Storage instruction	For continuous use, store undiluted antibody at 2-8°C for up to a week. For long-term storage, aliquot and store at -20°C or below. Storage in frost free freezers is not recommended. Avoid repeated freeze/thaw cycles. Suggest spin the vial prior to opening. The antibody solution should be gently mixed before use.

Note For laboratory research only, not for drug, diagnostic or other use.

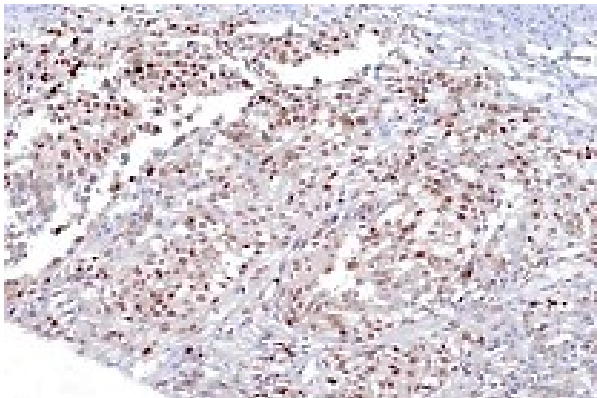
## Bioinformation

---

Gene Symbol	PRAME
Gene Full Name	PRAME Nuclear Receptor Transcriptional Regulator
Background	This gene encodes an antigen that is preferentially expressed in human melanomas and that is recognized by cytolytic T lymphocytes. It is not expressed in normal tissues, except testis. The encoded protein acts as a repressor of retinoic acid receptor, and likely confers a growth advantage to cancer cells via this function. Alternative splicing results in multiple transcript variants. [provided by RefSeq, Apr 2014]
Function	Substrate-recognition component of a Cul2-RING (CRL2) E3 ubiquitin-protein ligase complex, which mediates ubiquitination of target proteins, leading to their degradation.The CRL2(PRAME) complex mediates ubiquitination and degradation of truncated MSRB1/SEPX1 selenoproteins produced by failed UGA/Sec decoding. [Uniprot]
Calculated Mw	58 kDa
PTM	Phosphoprotein.[Uniprot]
Cellular Localization	Cell membrane, Chromosome, Cytoplasm, Golgi apparatus, Membran, Nucleus

## Images

---



ARG67043 anti-PRAME antibody [SQab30314] IHC-P image

Immunohistochemistry: Formalin-fixed and paraffin-embedded human malignant melanoma stained with ARG67043 anti-PRAME antibody [SQab30314].