

## ARG67065 anti-ApoJ / Clusterin antibody [SQab30335]

Package: 100 µl  
Store at: -20°C

### Summary

Product Description	Recombinant Rabbit Monoclonal antibody [SQab30335] recognizes ApoJ / Clusterin
Tested Reactivity	Hu
Tested Application	IHC-P
Host	Rabbit
Clonality	Monoclonal
Clone	SQab30335
Isotype	IgG
Target Name	ApoJ / Clusterin
Species	Human
Immunogen	Recombinant protein fragment of ApoJ / Clusterin
Conjugation	Un-conjugated
Alternate Names	Clusterin; Apolipoprotein J; SGP-2; SP-40; APOJ; ApoJbeta; CLU2; CLU1; NA1/NA2; TRPM2; CLI; SGP2; Apo-J; TRPM-2; ApoJalpha; Aging-associated gene 4 protein; APO-J; Complement cytolysis inhibitor a chain; Ku70-binding protein 1; Complement cytolysis inhibitor b chain; Testosterone-repressed prostate message 2; Complement-associated protein SP-40;40; KUB1; AAG4; Complement cytolysis inhibitor

### Application Instructions

Application table	Application	Dilution
	IHC-P	1:100-1:200
Application Note	* The dilutions indicate recommended starting dilutions and the optimal dilutions or concentrations should be determined by the scientist.	

### Properties

Form	Liquid
Purification	Purification with Protein A.
Buffer	PBS, 0.01% Sodium azide, 40% Glycerol and 0.05% BSA.
Preservative	0.01% Sodium azide
Stabilizer	40% Glycerol and 0.05% BSA
Storage instruction	For continuous use, store undiluted antibody at 2-8°C for up to a week. For long-term storage, aliquot and store at -20°C. Storage in frost free freezers is not recommended. Avoid repeated freeze/thaw cycles. Suggest spin the vial prior to opening. The antibody solution should be gently mixed before use.
Note	For laboratory research only, not for drug, diagnostic or other use.

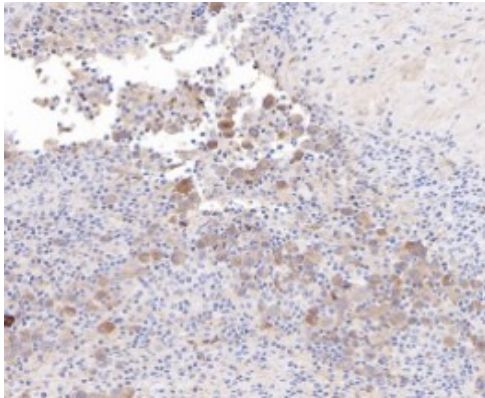
## Bioinformation

---

Gene Symbol	CLU
Gene Full Name	clusterin
Background	The protein encoded by this gene is a secreted chaperone that can under some stress conditions also be found in the cell cytosol. It has been suggested to be involved in several basic biological events such as cell death, tumor progression, and neurodegenerative disorders. Alternate splicing results in both coding and non-coding variants.[provided by RefSeq, May 2011]
Function	Intracellular forms interact with ubiquitin and SCF (SKP1-CUL1-F-box protein) E3 ubiquitin-protein ligase complexes and promote the ubiquitination and subsequent proteasomal degradation of target proteins.[UniProt]
Calculated Mw	52 kDa
PTM	Disulfide bond, Glycoprotein, Phosphoprotein, Ubl conjugation. [Uniprot]
Cellular Localization	Cytoplasm, Cytoplasmic vesicle, Endoplasmic reticulum, Membrane, Microsome, Mitochondrion, Nucleus, Secreted . [UniProt]

## Images

---



ARG67065 anti-ApoJ / Clusterin antibody [SQab30335] IHC-P image

Immunohistochemistry: Human ALCL stained with ARG67065 anti-ApoJ / Clusterin antibody [SQab30335] at 1:100 dilution.