

ARG67067 anti-Glucagon antibody [SQab30338]

Package: 100 µl
Store at: -20°C

Summary

| | |
|---------------------|---|
| Product Description | Recombinant Rabbit Monoclonal antibody [SQab30338] recognizes Glucagon |
| Tested Reactivity | Hu |
| Tested Application | IHC-P |
| Host | Rabbit |
| Clonality | Monoclonal |
| Clone | SQab30338 |
| Isotype | IgG |
| Target Name | Glucagon |
| Species | Human |
| Immunogen | Recombinant protein fragment of Glucagon |
| Conjugation | Un-conjugated |
| Alternate Names | GCG; Glucagon; GLP-1; GLP1; GLP2; GRPP; Glicentin-Related Polypeptide; Glucagon-Like Peptide 1; Glucagon-Like Peptide 2; Preproglucagon; Pro-Glucagon |

Application Instructions

| Application table | Application | Dilution |
|-------------------|--|-------------|
| | IHC-P | 1:100-1:200 |
| Application Note | * The dilutions indicate recommended starting dilutions and the optimal dilutions or concentrations should be determined by the scientist. | |

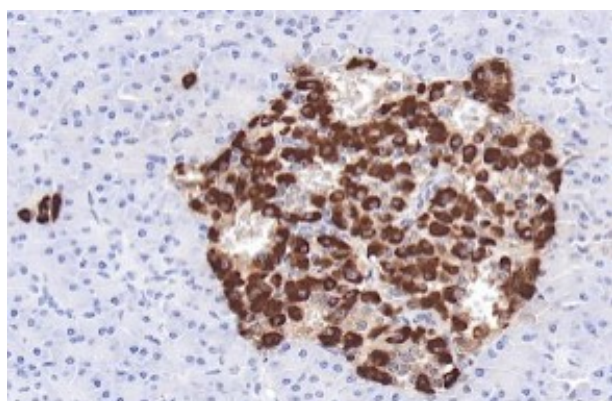
Properties

| | |
|---------------------|---|
| Form | Liquid |
| Purification | Purification with Protein A. |
| Buffer | PBS, 0.01% Sodium azide, 40% Glycerol and 0.05% BSA. |
| Preservative | 0.01% Sodium azide |
| Stabilizer | 40% Glycerol and 0.05% BSA |
| Storage instruction | For continuous use, store undiluted antibody at 2-8°C for up to a week. For long-term storage, aliquot and store at -20°C. Storage in frost free freezers is not recommended. Avoid repeated freeze/thaw cycles. Suggest spin the vial prior to opening. The antibody solution should be gently mixed before use. |
| Note | For laboratory research only, not for drug, diagnostic or other use. |

Bioinformation

| | |
|-----------------------|--|
| Gene Symbol | GCG |
| Gene Full Name | glucagon |
| Background | The protein encoded by this gene is actually a preproprotein that is cleaved into four distinct mature peptides. One of these, glucagon, is a pancreatic hormone that counteracts the glucose-lowering action of insulin by stimulating glycogenolysis and gluconeogenesis. Glucagon is a ligand for a specific G-protein linked receptor whose signalling pathway controls cell proliferation. Two of the other peptides are secreted from gut endocrine cells and promote nutrient absorption through distinct mechanisms. Finally, the fourth peptide is similar to glicentin, an active enteroglucagon. [provided by RefSeq, Jul 2008] |
| Function | Plays a key role in glucose metabolism and homeostasis. Regulates blood glucose by increasing gluconeogenesis and decreasing glycolysis. A counterregulatory hormone of insulin, raises plasma glucose levels in response to insulin-induced hypoglycemia. Plays an important role in initiating and maintaining hyperglycemic conditions in diabetes. [UniProt] |
| Highlight | Related news: Studying obesity and appetite control by quantifying orexigenic and anorexigenic hormones; |
| Calculated Mw | 21 kDa |
| PTM | Amidation, Cleavage on pair of basic residues, Phosphoprotein. [UniProt] |
| Cellular Localization | Secreted. [UniProt] |

Images



ARG67067 anti-Glucagon antibody [SQab30338] IHC-P image

Immunohistochemistry: Human pancreas tissue stained with ARG67067 anti-Glucagon antibody [SQab30338] at 1:100 dilution.
