

**ARG67077**  
**anti-HBA1 / Hemoglobin Subunit Alpha 1 antibody [SQab30355]**Package: 100 µl  
Store at: -20°C

### Summary

Product Description	Recombinant Rabbit Monoclonal antibody [SQab30355] recognizes HBA1 / Hemoglobin Subunit Alpha 1
Tested Reactivity	Hu
Tested Application	IHC-P
Host	Rabbit
Clonality	Monoclonal
Clone	SQab30355
Isotype	IgG
Target Name	HBA1 / Hemoglobin Subunit Alpha 1
Species	Human
Immunogen	Synthetic peptide of HBA1 / Hemoglobin Subunit Alpha 1.
Conjugation	Un-conjugated
Alternate Names	HBA1; Hemoglobin Subunit Alpha 1; HBA-T3; Hemoglobin Subunit Alpha; Hemoglobin, Alpha 1; Hemoglobin Alpha 1 Globin Chain; Hemoglobin Alpha Chain; Alpha-2 Globin Chain; Alpha Globin Chain; Alpha One Globin; Delta Globin; Alpha-Globin; METHBA; ECYT7; HBH

### Application Instructions

Application table	Application	Dilution
	IHC-P	1:100-1:200
Application Note	IHC-P: Antigen Retrieval: Heat mediation was performed in Tris/EDTA buffer (pH 9.0). * The dilutions indicate recommended starting dilutions and the optimal dilutions or concentrations should be determined by the scientist.	

### Properties

Form	Liquid
Purification	Purification with Protein A.
Buffer	PBS, 0.01% Sodium azide, 40% Glycerol and 0.05% BSA.
Preservative	0.01% Sodium azide
Stabilizer	40% Glycerol and 0.05% BSA
Storage instruction	For continuous use, store undiluted antibody at 2-8°C for up to a week. For long-term storage, aliquot and store at -20°C. Storage in frost free freezers is not recommended. Avoid repeated freeze/thaw cycles. Suggest spin the vial prior to opening. The antibody solution should be gently mixed before use.
Note	For laboratory research only, not for drug, diagnostic or other use.

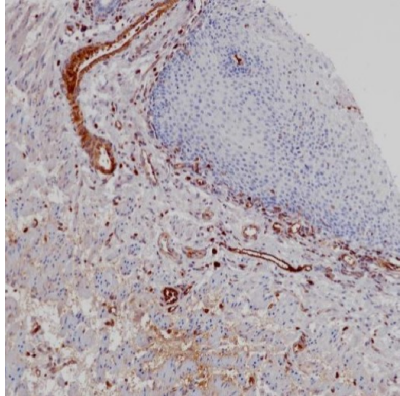
## Bioinformation

---

Gene Symbol	HBA1
Gene Full Name	Hemoglobin Subunit Alpha 1
Background	The human alpha globin gene cluster located on chromosome 16 spans about 30 kb and includes seven loci: 5'- zeta - pseudozeta - mu - pseudoalpha-1 - alpha-2 - alpha-1 - theta - 3'. The alpha-2 (HBA2) and alpha-1 (HBA1) coding sequences are identical. These genes differ slightly over the 5' untranslated regions and the introns, but they differ significantly over the 3' untranslated regions. Two alpha chains plus two beta chains constitute HbA, which in normal adult life comprises about 97% of the total hemoglobin; alpha chains combine with delta chains to constitute HbA-2, which with HbF (fetal hemoglobin) makes up the remaining 3% of adult hemoglobin. Alpha thalassemias result from deletions of each of the alpha genes as well as deletions of both HBA2 and HBA1; some nondeletion alpha thalassemias have also been reported.
Function	Involved in oxygen transport from the lung to the various peripheral tissues.
Calculated Mw	15 kDa
PTM	Acetylation, Glycation, Glycoprotein, Phosphoprotein

## Images

---



ARG67077 anti-HBA1 / Hemoglobin Subunit Alpha 1 antibody [SQab30355] IHC-P image

Immunohistochemistry: Human esophagus stained with ARG67077 anti-HBA1 / Hemoglobin Subunit Alpha 1 antibody [SQab30355]