

## ARG67102 anti-LPGAT1 antibody

Package: 100 µl  
Store at: -20°C

### Summary

Product Description	Rabbit Polyclonal antibody recognizes LPGAT1
Tested Reactivity	Hu, Ms, Rat
Tested Application	WB
Host	Rabbit
Clonality	Polyclonal
Isotype	IgG
Target Name	LPGAT1
Species	Human
Immunogen	Human LPGAT1 Synthesized peptide
Conjugation	Un-conjugated
Alternate Names	LPGAT1; Lysophosphatidylglycerol Acyltransferase 1; LPLAT7; Lysophospholipid Acyltransferase 7; KIAA0205; FAM34A1; FAM34A; NET8; Acyl-CoA:Lysophosphatidylglycerol Acyltransferase 1; Acyl-CoA:Monoacylglycerol Acyltransferase LPGAT1; 2-Acylglycerophosphocholine O-Acyltransferase; Stearoyl-CoA:1-Lyso-2-Acyl-PE Acyltransferase; Family With Sequence Similarity 34, Member A

### Application Instructions

Application table	Application	Dilution
	WB	1:500-2000
Application Note	* The dilutions indicate recommended starting dilutions and the optimal dilutions or concentrations should be determined by the scientist.	

### Properties

Form	Liquid
Purification	Affinity purification with immunogen.
Buffer	PBS (pH 7.4), 0.02% Sodium azide and 50% Glycerol.
Preservative	0.02% Sodium azide
Stabilizer	50% Glycerol
Storage instruction	For continuous use, store undiluted antibody at 2-8°C for up to a week. For long-term storage, aliquot and store at -20°C. Storage in frost free freezers is not recommended. Avoid repeated freeze/thaw cycles. Suggest spin the vial prior to opening. The antibody solution should be gently mixed before use.

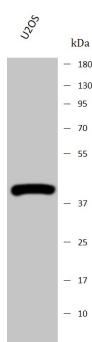
### Bioinformation

Gene Symbol	LPGAT1
Gene Full Name	Lysophosphatidylglycerol Acyltransferase 1
Background	This gene encodes a member of the lysophospholipid acyltransferase family. The encoded protein catalyzes the reacylation of lysophosphatidylglycerol to phosphatidylglycerol, a membrane phospholipid that is an important precursor for the synthesis of cardiolipin. Alternative splicing results in multiple transcript variants.
Function	Lysophospholipid acyltransferase involved in fatty acyl chain remodeling of glycerophospholipids in the endoplasmic reticulum membrane.
Calculated Mw	43 kDa
Cellular Localization	Endoplasmic reticulum, Membrane

## Images

---

ARG67102 anti-LPGAT1 antibody WB image



Western blot: U2OS stained with ARG67102 anti-LPGAT1 antibody at 1:1000 dilution.

---