

## ARG67104 anti-LCMT2 antibody

Package: 100 µl  
Store at: -20°C

### Summary

Product Description	Rabbit Polyclonal antibody recognizes LCMT2
Tested Reactivity	Hu, Ms, Rat
Tested Application	IHC-P, WB
Host	Rabbit
Clonality	Polyclonal
Isotype	IgG
Target Name	LCMT2
Species	Human
Immunogen	Human LCMT2 Synthesized peptide
Conjugation	Un-conjugated
Alternate Names	LCMT2; Leucine Carboxyl Methyltransferase 2; TYW4; KIAA0547; PPM2; TRNA(Phe) (7-(3-Amino-3-(Methoxycarbonyl)Propyl)Wyosine(37)-N)-Methoxycarbonyltransferase; TRNA(Phe) (7-(3-Amino-3-Carboxypropyl)Wyosine(37)-O)-Methyltransferase

### Application Instructions

Application table	Application	Dilution
	IHC-P	1:50-300
	WB	1:500-2000
Application Note	* The dilutions indicate recommended starting dilutions and the optimal dilutions or concentrations should be determined by the scientist.	

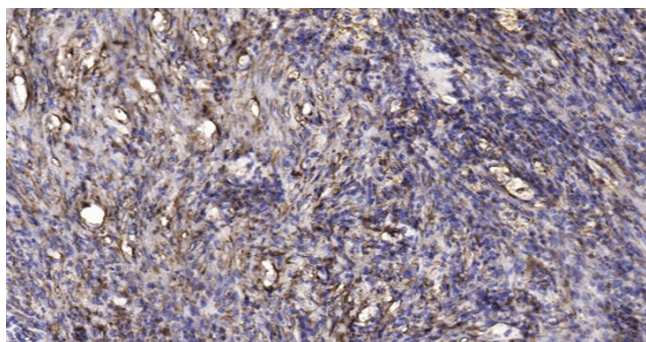
### Properties

Form	Liquid
Purification	Affinity purification with immunogen.
Buffer	PBS (pH 7.4), 0.02% Sodium azide, 50% Glycerol and 0.5% BSA.
Preservative	0.02% Sodium azide
Stabilizer	50% Glycerol and 0.5% BSA
Storage instruction	For continuous use, store undiluted antibody at 2-8°C for up to a week. For long-term storage, aliquot and store at -20°C. Storage in frost free freezers is not recommended. Avoid repeated freeze/thaw cycles. Suggest spin the vial prior to opening. The antibody solution should be gently mixed before use.

### Bioinformation

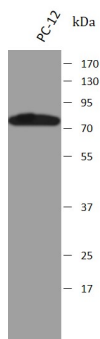
Gene Symbol	LCMT2
Gene Full Name	Leucine Carboxyl Methyltransferase 2
Background	The protein encoded by this intronless gene belongs to the highly variable methyltransferase superfamily. This gene is the inferred homolog of the <i>Saccharomyces cerevisiae</i> carboxymethyltransferase gene PPM2 that is essential for the synthesis of the hypermodified guanosine Wybutosine (yW).
Function	Probable S-adenosyl-L-methionine-dependent methyltransferase that acts as a component of the wybutosine biosynthesis pathway. Wybutosine is a hyper modified guanosine with a tricyclic base found at the 3'-position adjacent to the anticodon of eukaryotic phenylalanine tRNA.
Calculated Mw	76 kDa

## Images



ARG67104 anti-LCMT2 antibody IHC-P image

Immunohistochemistry: Human lung squamous cell carcinoma stained with ARG67104 anti-LCMT2 antibody at 1:200 dilution.



ARG67104 anti-LCMT2 antibody WB image

Western blot: PC-12 stained with ARG67104 anti-LCMT2 antibody at 1:1000 dilution.