

## ARG67105 anti-PALMD antibody

Package: 100 µl  
Store at: -20°C

### Summary

Product Description	Rabbit Polyclonal antibody recognizes PALMD
Tested Reactivity	Hu, Ms, Rat
Tested Application	WB
Host	Rabbit
Clonality	Polyclonal
Isotype	IgG
Target Name	PALMD
Species	Human
Immunogen	Human PALMD Synthesized peptide
Conjugation	Un-conjugated
Alternate Names	PALMD; Palmdelphin; PALML; C1orf11; Paralemmin-Like Protein; FLJ20271; Paralemnin-Like Protein

### Application Instructions

Application table	Application	Dilution
	WB	1:500-2000
Application Note	* The dilutions indicate recommended starting dilutions and the optimal dilutions or concentrations should be determined by the scientist.	

### Properties

Form	Liquid
Purification	Affinity purification with immunogen.
Buffer	PBS (pH 7.4), 0.02% Sodium azide, 50% Glycerol and 0.5% BSA.
Preservative	0.02% Sodium azide
Stabilizer	50% Glycerol and 0.5% BSA
Storage instruction	For continuous use, store undiluted antibody at 2-8°C for up to a week. For long-term storage, aliquot and store at -20°C. Storage in frost free freezers is not recommended. Avoid repeated freeze/thaw cycles. Suggest spin the vial prior to opening. The antibody solution should be gently mixed before use.

### Bioinformation

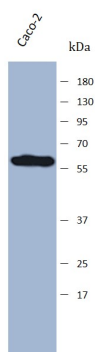
Gene Symbol	PALMD
Gene Full Name	Palmdelphin

Background	Predicted to be involved in regulation of cell shape. Predicted to be located in dendrite. Predicted to be active in cytoplasm.
Calculated Mw	63 kDa
PTM	Acetylation, Isopeptide bond, Phosphoprotein, Ubl conjugation
Cellular Localization	Cell projection, Cytoplasm, Synapse

## Images

---

ARG67105 anti-PALMD antibody WB image



Western blot: Caco-2 stained with ARG67105 anti-PALMD antibody at 1:1000 dilution.

---