

## ARG67112 anti-PCDH17 / PCDH68 antibody

Package: 100 µl  
Store at: -20°C

### Summary

|                     |   |
|---------------------|---|
| Product Description | Rabbit Polyclonal antibody recognizes PCDH17 / PCDH68   |
| Tested Reactivity   | Hu, Ms, Rat   |
| Tested Application  | IHC-P, WB   |
| Host                | Rabbit  |
| Clonality           | Polyclonal  |
| Isotype             | IgG   |
| Target Name         | PCDH17 / PCDH68   |
| Species             | Human   |
| Immunogen           | Human PCDH17 / PCDH68 Synthesized peptide   |
| Conjugation         | Un-conjugated   |
| Alternate Names     | PCDH17; Protocadherin 17; PCDH68; PCH68; Protocadherin-17; Protocadherin 68; Protocadherin-68 |

### Application Instructions

| Application table | Application  | Dilution   |
|-------------------|--|------------|
|                   | IHC-P  | 1:50-300   |
|                   | WB   | 1:500-2000 |
| Application Note  | * The dilutions indicate recommended starting dilutions and the optimal dilutions or concentrations should be determined by the scientist. |            |

### Properties

|                     |   |
|---------------------|---|
| Form                | Liquid  |
| Purification        | Affinity purification with immunogen.   |
| Buffer              | PBS (pH 7.4), 0.02% Sodium azide, 50% Glycerol and 0.5% BSA.  |
| Preservative        | 0.02% Sodium azide  |
| Stabilizer          | 50% Glycerol and 0.5% BSA   |
| Storage instruction | For continuous use, store undiluted antibody at 2-8°C for up to a week. For long-term storage, aliquot and store at -20°C. Storage in frost free freezers is not recommended. Avoid repeated freeze/thaw cycles. Suggest spin the vial prior to opening. The antibody solution should be gently mixed before use. |

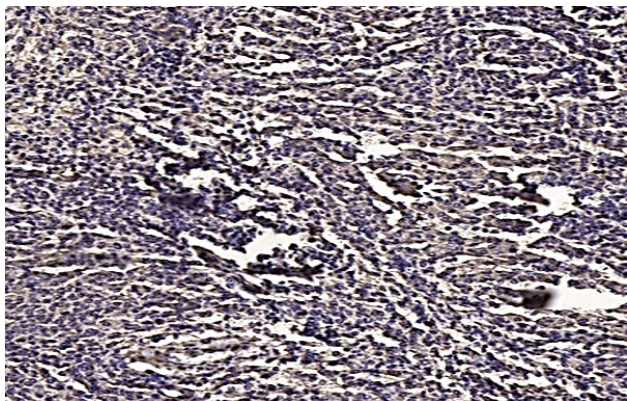
### Bioinformation

|             |        |
|-------------|--------|
| Gene Symbol | PCDH17 |
|-------------|--------|

|                       |   |
|-----------------------|---|
| Gene Full Name        | Protocadherin 17  |
| Background            | This gene belongs to the protocadherin gene family, a subfamily of the cadherin superfamily. The encoded protein contains six extracellular cadherin domains, a transmembrane domain, and a cytoplasmic tail differing from those of the classical cadherins. The encoded protein may play a role in the establishment and function of specific cell-cell connections in the brain. |
| Function              | Potential calcium-dependent cell-adhesion protein.  |
| Calculated Mw         | 126 kDa   |
| PTM                   | Glycoprotein  |
| Cellular Localization | Cell membrane, Membrane   |

Images

---



ARG67112 anti-PCDH17 / PCDH68 antibody IHC-P image

Immunohistochemistry: Human meningioma stained with ARG67112 anti-PCDH17 / PCDH68 antibody at 1:200 dilution.



ARG67112 anti-PCDH17 / PCDH68 antibody WB image

Western blot: U2OS stained with ARG67112 anti-PCDH17 / PCDH68 antibody at 1:1000 dilution.