

ARG67119 anti-RhoBTB1 + RhoBTB2 antibody

Package: 100 µl
Store at: -20°C

Summary

Product Description	Rabbit Polyclonal antibody recognizes RhoBTB1 + RhoBTB2
Tested Reactivity	Hu
Predict Reactivity	Ms
Tested Application	IHC-P, WB
Specificity	ARG67119 anti-RhoBTB1 + RhoBTB2 antibody detects endogenous levels of RhoBTB1 and RhoBTB2
Host	Rabbit
Clonality	Polyclonal
Isotype	IgG
Target Name	RhoBTB1 + RhoBTB2
Species	Human
Immunogen	Human RhoBTB2 synthesized peptide
Conjugation	Un-conjugated
Alternate Names	RHOBTB1; Rho Related BTB Domain Containing 1; KIAA0740; Rho-Related BTB Domain-Containing Protein 1; Rho-Related BTB Domain Containing 1; RHOBTB2; Rho Related BTB Domain Containing 2; DBC2; KIAA0717; Rho-Related BTB Domain-Containing Protein 2; Deleted In Breast Cancer 2 Gene Protein; P83; Rho-Related BTB Domain Containing 2; EIEE64; DEE64

Application Instructions

Application table	Application	Dilution
	IHC-P	1:100 - 1:300
	WB	1:500 - 1:2000
Application Note	* The dilutions indicate recommended starting dilutions and the optimal dilutions or concentrations should be determined by the scientist.	
Observed Size	79~ 82 kDa	

Properties

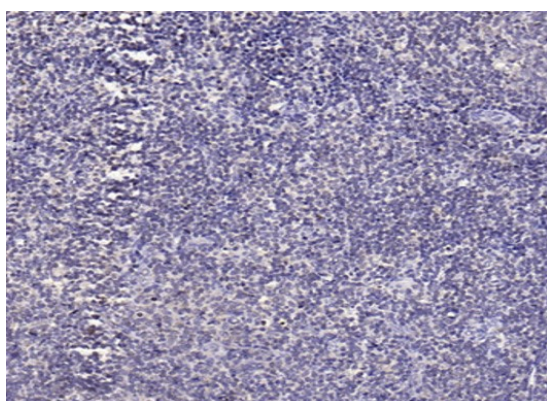
Form	Liquid
Purification	Purified by antigen-affinity chromatography.
Buffer	PBS (pH 7.4), 0.02% Sodium azide, 0.5% BSA and 50% Glycerol.
Preservative	0.02% Sodium azide
Stabilizer	0.5% BSA and 50% Glycerol
Concentration	1 mg/ml

Storage instruction	For continuous use, store undiluted antibody at 2-8°C for up to a week. For long-term storage, aliquot and store at -20°C or below. Storage in frost free freezers is not recommended. Avoid repeated freeze/thaw cycles. Suggest spin the vial prior to opening. The antibody solution should be gently mixed before use.
Note	For laboratory research only, not for drug, diagnostic or other use.

Bioinformation

Gene Symbol	RHOBTB2
Gene Full Name	Rho Related BTB Domain Containing 2
Background	The protein encoded by this gene is a small Rho GTPase and a candidate tumor suppressor. The encoded protein interacts with the cullin-3 protein, a ubiquitin E3 ligase necessary for mitotic cell division. This protein inhibits the growth and spread of some types of breast cancer. Three transcript variants encoding different isoforms have been found for this gene.
Calculated Mw	79 / 82 kDa
Cellular Localization	Plasma membrane

Images



ARG67119 anti-RhoBTB1 + RhoBTB2 antibody IHC-P image

Immunohistochemistry: Human tonsil stained with ARG67119 anti-RhoBTB1 + RhoBTB2 antibody at 1:200 dilution.



ARG67119 anti-RhoBTB1 + RhoBTB2 antibody WB image

Western blot: HeLa stained with ARG67119 anti-RhoBTB1 + RhoBTB2 antibody.

ARG67119 anti-RhoBTB1 + RhoBTB2 antibody WB image

Western blot: HepG2 stained with ARG67119 anti-RhoBTB1 + RhoBTB2 antibody.

