

ARG67120 anti-SUPV3L1 / SUV3 antibody

Package: 100 µl
Store at: -20°C

Summary

Product Description	Rabbit Polyclonal antibody recognizes SUPV3L1 / SUV3
Tested Reactivity	Hu
Predict Reactivity	Ms, Rat
Tested Application	IHC-P, WB
Host	Rabbit
Clonality	Polyclonal
Isotype	IgG
Target Name	SUPV3L1 / SUV3
Species	Human
Immunogen	Human SUPV3L1 / SUV3 synthesized peptide
Conjugation	Un-conjugated
Alternate Names	SUPV3L1; Suv3 Like RNA Helicase; SUV3; ATP-Dependent RNA Helicase SUPV3L1, Mitochondrial; SUV3-Like Protein 1; Suppressor Of Var1, 3-Like 1 (S. Cerevisiae); Suppressor Of Var1 (S.Cerevisiae) 3-Like 1; Suppressor Of Var1 3-Like Protein 1; Suppressor Of Var1, 3-Like 1(SUV3); Suppressor Of Var1, 3-Like 1; SUV3-Like Helicase

Application Instructions

Application table	Application	Dilution
	IHC-P	1:100 - 1:300
	WB	1:500 - 1:2000
Application Note	* The dilutions indicate recommended starting dilutions and the optimal dilutions or concentrations should be determined by the scientist.	
Observed Size	88 kDa	

Properties

Form	Liquid
Purification	Purified by antigen-affinity chromatography.
Buffer	PBS (pH 7.4), 0.02% Sodium azide, 0.5% BSA and 50% Glycerol.
Preservative	0.02% Sodium azide
Stabilizer	0.5% BSA and 50% Glycerol
Concentration	1 mg/ml
Storage instruction	For continuous use, store undiluted antibody at 2-8°C for up to a week. For long-term storage, aliquot and store at -20°C or below. Storage in frost free freezers is not recommended. Avoid repeated

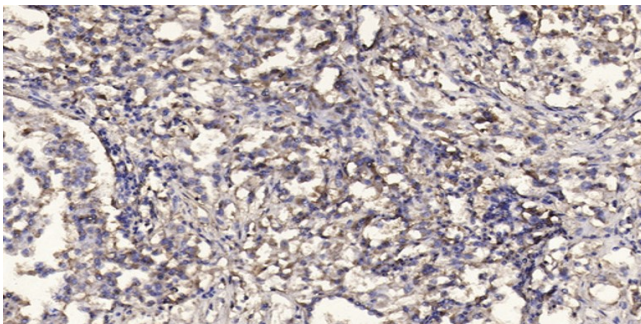
freeze/thaw cycles. Suggest spin the vial prior to opening. The antibody solution should be gently mixed before use.

Note For laboratory research only, not for drug, diagnostic or other use.

Bioinformation

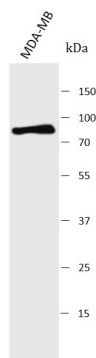
Gene Symbol	SUPV3L1
Gene Full Name	Suv3 Like RNA Helicase
Background	Enables helicase activity; nucleic acid binding activity; and protein homodimerization activity. Involved in several processes, including mitochondrial RNA metabolic process; mitochondrion morphogenesis; and positive regulation of mitochondrial RNA catabolic process. Located in mitochondrial nucleoid and nucleus. Part of mitochondrial degradosome.
Function	Major helicase player in mitochondrial RNA metabolism. Component of the mitochondrial degradosome (mtEXO) complex, that degrades 3' overhang double-stranded RNA with a 3'-to-5' directionality in an ATP-dependent manner. Involved in the degradation of non-coding mitochondrial transcripts (MT-ncRNA) and tRNA-like molecules.
Calculated Mw	88 kDa
PTM	Acetylation, Phosphoprotein

Images



ARG67120 anti-SUPV3L1 / SUV3 antibody IHC-P image

Immunohistochemistry: Human Squamous cell carcinoma stained with ARG67120 anti-SUPV3L1 / SUV3 antibody at 1:200 dilution.



ARG67120 anti-SUPV3L1 antibody WB image

Western blot: MDA-MB stained with ARG67120 anti-SUPV3L1 antibody at 1:1000 dilution.