

**ARG67128**  
**anti-FOXL1 antibody**Package: 100 µl  
Store at: -20°C

### Summary

Product Description	Rabbit Polyclonal antibody recognizes FOXL1
Tested Reactivity	Hu, Mk
Tested Application	IHC-P, WB
Host	Rabbit
Clonality	Polyclonal
Isotype	IgG
Target Name	FOXL1
Species	Human
Immunogen	Synthetic peptide of Human CXCR7 / CD187 (a.a. 1326-1375).
Conjugation	Un-conjugated
Alternate Names	FOXL1; Forkhead Box L1; FREAC7; FKHL11; FKHL6; Forkhead-Related Transcription Factor 7; Forkhead-Related Protein FKHL11; Forkhead Box Protein L1 ; Forkhead-Like 11; FREAC-7; OTSC11

### Application Instructions

Application table	Application	Dilution
	IHC-P	1:100 - 1:300
	WB	1:500 - 1:2000
Application Note	* The dilutions indicate recommended starting dilutions and the optimal dilutions or concentrations should be determined by the scientist.	

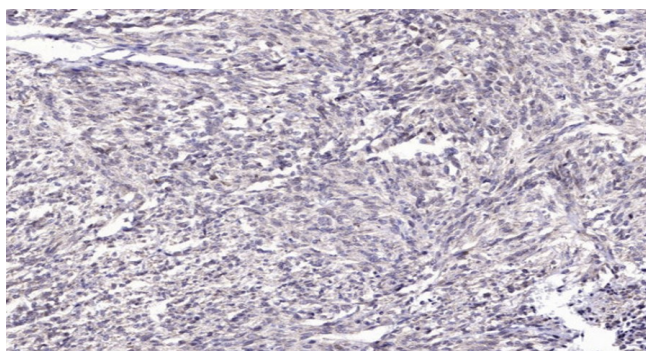
### Properties

Form	Liquid
Purification	Affinity chromatography using epitope-specific immunogen.
Buffer	PBS with 0.02% Sodium azide, 0.5% BSA and 50% Glycerol.
Preservative	0.02% Sodium azide
Stabilizer	5% BSA and 50% Glycerol
Storage instruction	For continuous use, store undiluted antibody at 2-8°C for up to a week. For long-term storage, aliquot and store at -20°C or below. Storage in frost free freezers is not recommended. Avoid repeated freeze/thaw cycles. Suggest spin the vial prior to opening. The antibody solution should be gently mixed before use.
Note	For laboratory research only, not for drug, diagnostic or other use.

## Bioinformation

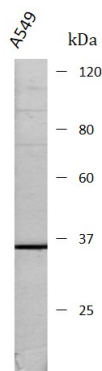
Gene Symbol	FOXL1
Gene Full Name	forkhead box L1
Background	This gene encodes a member of the forkhead/winged helix-box (FOX) family of transcription factors. FOX transcription factors are characterized by a distinct DNA-binding forkhead domain and play critical roles in the regulation of multiple processes including metabolism, cell proliferation and gene expression during ontogenesis. [provided by RefSeq, Nov 2012]
Function	Transcription factor required for proper proliferation and differentiation in the gastrointestinal epithelium. Target gene of the hedgehog (Hh) signaling pathway via GLI2 and GLI3 transcription factors (By similarity). [UniProt]
Calculated Mw	36 kDa
Cellular Localization	Nucleus. [UniProt]

## Images



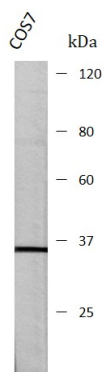
ARG67128 anti-FOXL1 antibody IHC-P image

Immunohistochemistry: Human Small intestinal stromal tumor stained with ARG67128 anti-FOXL1 antibody.



ARG67128 anti-FOXL1 antibody WB image

Western blot: A549 stained with ARG67128 anti-FOXL1 antibody at dilution.



ARG67128 anti-FOXL1 antibody WB image

Western blot: COS7 stained with ARG67128 anti-FOXL1 antibody.