

ARG67137 anti-Lamin B1 antibody

Package: 100 µl
Store at: -20°C

Summary

Product Description	Rabbit Polyclonal antibody recognizes Lamin B1
Tested Reactivity	Hu, Ms, Rat
Tested Application	IHC-P, WB
Host	Rabbit
Clonality	Polyclonal
Isotype	IgG
Target Name	Lamin B1
Species	Human
Immunogen	Synthetic peptide of Human Lamin B1
Conjugation	Un-conjugated
Alternate Names	LMNB1; Lamin B1; Lamin-B1; LMN2; LMNB; MCPH26; ADLD; LMN

Application Instructions

Application table	Application	Dilution
	IHC-P	1:100 - 1:300
	WB	1:500 - 1:2000
Application Note	* The dilutions indicate recommended starting dilutions and the optimal dilutions or concentrations should be determined by the scientist.	

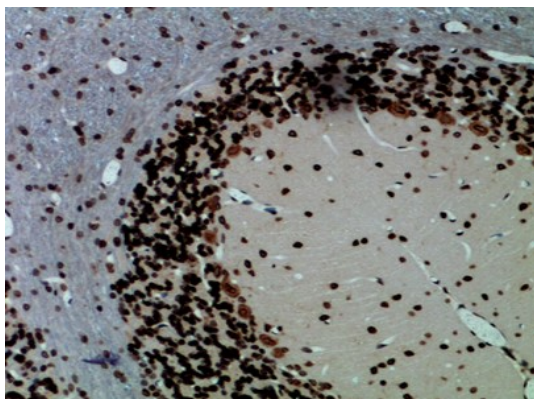
Properties

Form	Liquid
Purification	Affinity chromatography purified
Buffer	PBS, 0.02% Sodium azide, 0.5% BSA and 50% Glycerol
Preservative	0.02% Sodium azide
Stabilizer	0.5% BSA, 50% Glycerol
Concentration	1 mg/ml
Storage instruction	For continuous use, store undiluted antibody at 2-8°C for up to a week. For long-term storage, aliquot and store at -20°C or below. Storage in frost free freezers is not recommended. Avoid repeated freeze/thaw cycles. Suggest spin the vial prior to opening. The antibody solution should be gently mixed before use.
Note	For laboratory research only, not for drug, diagnostic or other use.

Bioinformation

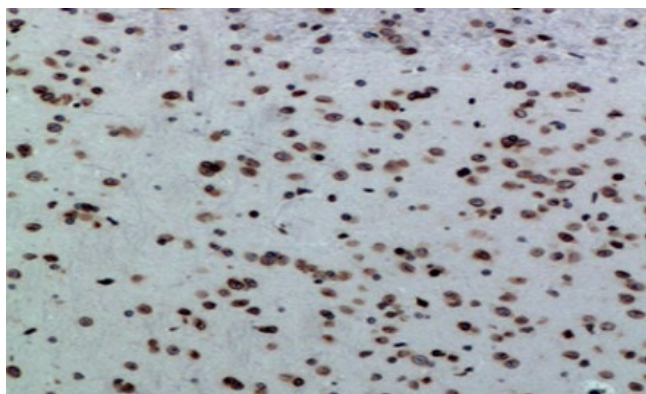
Gene Symbol	LMNB1
Gene Full Name	lamin B1
Background	This gene encodes one of the two B-type lamin proteins and is a component of the nuclear lamina. A duplication of this gene is associated with autosomal dominant adult-onset leukodystrophy (ADLD). Alternative splicing results in multiple transcript variants. [provided by RefSeq, Dec 2015]
Function	The structural integrity of the lamina is strictly controlled by the cell cycle, as seen by the disintegration and formation of the nuclear envelope in prophase and telophase, respectively. [UniProt]
Highlight	Related products: Lamin B1 antibodies ; Lamin B1 Duos / Panels ;
Research Area	Cancer antibody; Cell Biology and Cellular Response antibody; Cell Death antibody; Controls and Markers antibody; Signaling Transduction antibody; NRF-2 Nuclear Localization Study antibody
Calculated Mw	66 kDa
PTM	Acetylation, Disulfide bond, Glycoprotein, Isopeptide bond, Lipoprotein, Methylation, Phosphoprotein, Prenylation, Ubl conjugation. [UniProt]
Cellular Localization	Intermediate filament, Nucleus. [UniProt]

Images



ARG67137 anti-Lamin B1 antibody IHC-P image

Immunohistochemistry: Rat brain stained with ARG67137 anti-Lamin B1 antibody at 1:100 dilution.



ARG67137 anti-Lamin B1 antibody IHC-P image

Immunohistochemistry: Mouse brain stained with ARG67137 anti-Lamin B1 antibody at 1:100 dilution.