

ARG67151 anti-JAM2 / JAMB / CD322 antibody

Package: 100 µl
Store at: -20°C

Summary

Product Description	Rabbit Polyclonal antibody recognizes JAM2 / JAMB / CD322
Tested Reactivity	Hu, Rat
Predict Reactivity	Ms
Tested Application	IHC-P, WB
Host	Rabbit
Clonality	Polyclonal
Isotype	IgG
Target Name	JAM2 / JAMB / CD322
Species	Human
Immunogen	Synthesized peptide of human JAM-B (internal region).
Conjugation	Un-conjugated
Alternate Names	JAM2; Junctional Adhesion Molecule 2; VE-JAM; JAM-B; JAM-2; Vascular Endothelial Junction-Associated Molecule; Junctional Adhesion Molecule B; C21orf43; CD322; JAMB; VEJAM; JAM-IT/VE-JAM; CD322 Antigen; PRO245; IBGC8

Application Instructions

Application table	Application	Dilution
	IHC-P	1:100-300
	WB	1:500 - 1:2000
Application Note	The dilutions indicate recommended starting dilutions and the optimal dilutions or concentrations should be determined by the scientist.	

Properties

Form	Liquid
Purification	Affinity purification with immunogen.
Buffer	PBS, 0.02% Sodium azide, 50% Glycerol and 0.5% BSA.
Preservative	0.02% Sodium azide
Stabilizer	50% Glycerol and 0.5% BSA
Concentration	1 mg/ml
Storage instruction	For continuous use, store undiluted antibody at 2-8°C for up to a week. For long-term storage, aliquot and store at -20°C or below. Storage in frost free freezers is not recommended. Avoid repeated freeze/thaw cycles. Suggest spin the vial prior to opening. The antibody solution should be gently mixed before use.

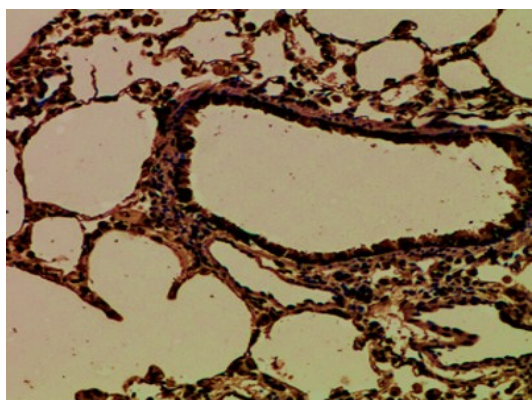
Note

For laboratory research only, not for drug, diagnostic or other use.

Bioinformation

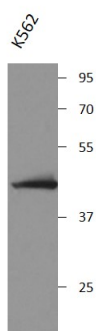
Gene Symbol	JAM2
Gene Full Name	Junctional Adhesion Molecule 2
Background	This gene belongs to the immunoglobulin superfamily, and the junctional adhesion molecule (JAM) family. The protein encoded by this gene is a type I membrane protein that is localized at the tight junctions of both epithelial and endothelial cells. It acts as an adhesive ligand for interacting with a variety of immune cell types, and may play a role in lymphocyte homing to secondary lymphoid organs. Alternatively spliced transcript variants have been found for this gene. [provided by RefSeq, Jul 2012]
Research Area	Cell Biology and Cellular Response antibody; Signaling Transduction antibody
Calculated Mw	33 kDa

Images



ARG67151 anti-JAM2 / JAMB / CD322 antibody IHC-P image

Immunohistochemistry: Rat lung stained with ARG67151 anti-JAM2 / JAMB / CD322 antibody at 1:100 dilution.



ARG67151 anti-JAM2 / JAMB / CD322 antibody WB image

Western blot: K562 stained with ARG67151 anti-JAM2 / JAMB / CD322 antibody.