

**ARG67156**  
anti-ABI2 antibodyPackage: 100 µl  
Store at: -20°C

### Summary

Product Description	Rabbit Polyclonal antibody recognizes ABI2
Tested Reactivity	Arabi
Tested Application	WB
Host	Rabbit
Clonality	Polyclonal
Isotype	IgG
Target Name	ABI2
Species	Plant
Immunogen	Synthetic peptide corresponding to C-terminus of arabidopsis thaliana ABI2 protein.
Conjugation	Un-conjugated
Alternate Names	PP2C77; Protein phosphatase 2C 77; AtPP2C77; Protein ABSCISIC ACID-INSENSITIVE 2; Protein phosphatase 2C ABI2; PP2C ABI2

### Application Instructions

Application table	Application	Dilution
	WB	1:500 - 1:2000
Application Note	* The dilutions indicate recommended starting dilutions and the optimal dilutions or concentrations should be determined by the scientist.	
Observed Size	46 kDa	

### Properties

Form	Liquid
Purification	Affinity purification with immunogen.
Buffer	0.42% Potassium phosphate (pH 7.3), 0.87% NaCl, 0.01% Sodium azide and 30% Glycerol.
Preservative	0.01% Sodium azide
Stabilizer	30% Glycerol
Storage instruction	For continuous use, store undiluted antibody at 2-8°C for up to a week. For long-term storage, aliquot and store at -20°C or below. Storage in frost free freezers is not recommended. Avoid repeated freeze/thaw cycles. Suggest spin the vial prior to opening. The antibody solution should be gently mixed before use.
Note	For laboratory research only, not for drug, diagnostic or other use.

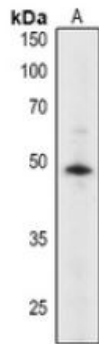
## Bioinformation

---

Gene Symbol	ABI2
Gene Full Name	Protein phosphatase 2C family protein
Background	Encodes a protein phosphatase 2C and is involved in ABA signal transduction. Binds fibrillin preprotein in vitro and in vivo.
Function	Repressor of the abscisic acid (ABA) signaling pathway that regulates numerous ABA responses, such as stomatal closure, osmotic water permeability of the plasma membrane (Pos), high light stress, response to glucose, seed germination and inhibition of vegetative growth. During the stomatal closure regulation, modulates the inward calcium-channel permeability as well as H2O2 and oxidative burst in response to ABA and dehydration. Represses GHR1 and, to some extent, SRK2E/OST1, kinases involved in the regulation of SLAC1-dependent stomatal closure. [UniProt]
Calculated Mw	46 kDa

## Images

---



ARG67156 anti-ABI2 antibody WB image

Western blot: Arabidopsis thaliana stained with ARG67156 anti-ABI2 antibody.