

ARG67162 anti-CRD1 antibody

Package: 100 µl
Store at: -20°C

Summary

Product Description	Rabbit Polyclonal antibody recognizes CRD1
Tested Reactivity	Arabi
Tested Application	WB
Host	Rabbit
Clonality	Polyclonal
Isotype	IgG
Target Name	CRD1
Species	Plant
Immunogen	Synthetic peptide corresponding to center region of arabidopsis thaliana CRD1 protein.
Conjugation	Un-conjugated
Alternate Names	ACSF; AT103; CHL27; ZIP; Magnesium-protoporphyrin IX monoMethyl-ester [oxidative] cyclase chloroplastic; Mg-protoporphyrin IX monoMethyl-ester oxidative cyclase; Copper response defect 1 protein; Dicarboxylate diiron protein; AtZIP; MPE-cyclase

Application Instructions

Application table	Application	Dilution
	WB	1:500 - 1:2000
Application Note	* The dilutions indicate recommended starting dilutions and the optimal dilutions or concentrations should be determined by the scientist.	
Observed Size	47 kDa	

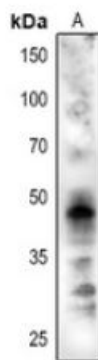
Properties

Form	Liquid
Purification	Affinity purification with immunogen.
Buffer	0.42% Potassium phosphate (pH 7.3), 0.87% NaCl, 0.01% Sodium azide and 30% Glycerol.
Preservative	0.01% Sodium azide
Stabilizer	30% Glycerol
Storage instruction	For continuous use, store undiluted antibody at 2-8°C for up to a week. For long-term storage, aliquot and store at -20°C or below. Storage in frost free freezers is not recommended. Avoid repeated freeze/thaw cycles. Suggest spin the vial prior to opening. The antibody solution should be gently mixed before use.
Note	For laboratory research only, not for drug, diagnostic or other use.

Bioinformation

Gene Symbol	CRD1
Gene Full Name	dicarboxylate diiron protein, putative (Crd1)
Background	Encodes a putative ZIP protein with varying mRNA accumulation in leaves, stems and roots. Has a consensus carboxylate-bridged di-iron binding site.
Function	Catalytic component of the MgProto monomethylester (MgProtoME) cyclase complex that catalyzes the formation of the isocyclic ring in chlorophyll biosynthesis . [UniProt]
Calculated Mw	47 kDa
Cellular Localization	Plastid, chloroplast inner membrane, chloroplast thylakoid membrane. [UniProt]

Images



ARG67162 anti-CRD1 antibody WB image

Western blot: *Arabidopsis thaliana* stained with ARG67162 anti-CRD1 antibody.