

## ARG70150 Human EpCAM recombinant protein (Active) (His-tagged, C-ter)

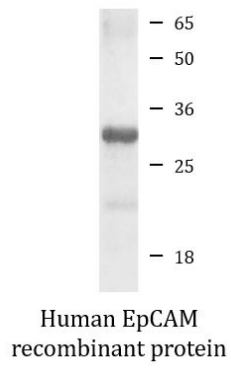
Package: 100 µg, 20 µg  
Store at: -20°C

### Summary

Product Description	E. coli expressed, His-tagged (C-ter) Active Human EpCAM recombinant protein
Tested Application	SDS-PAGE
Target Name	EpCAM
Species	Human
A.A. Sequence	Gln24 - Lys265
Expression System	E. coli
Activity	Active
Activity Note	Determined by the ability of the immobilized protein to support the adhesion of the 3T3 cells. The ED50 for this effect is 0.2-1.7 ng/mL.
Alternate Names	MIC18; EGP; Tumor-associated calcium signal transducer 1; Epithelial glycoprotein 314; KSA; Ep-CAM; Epithelial cell surface antigen; Adenocarcinoma-associated antigen; HNPCC8; Cell surface glycoprotein Trop-1; EGP40; TACSTD1; KS1/4; hEGP314; Major gastrointestinal tumor-associated protein GA733-2; M4S1; MK-1; Epithelial glycoprotein; KS 1/4 antigen; ESA; DIAR5; EGP314; Epithelial cell adhesion molecule; EGP-2; TROP1; CD antigen CD326

### Properties

Form	Powder
Purification Note	Endotoxin level is < 0.1 EU/µg of the protein, as determined by the LAL test.
Purity	> 95% (by SDS-PAGE)
Buffer	PBS (pH 8.0)
Reconstitution	



ARG70150 Human EpCAM recombinant protein (Active) (His-tagged, C-ter) SDS-PAGE image

SDS-PAGE analysis of ARG70150 Human EpCAM recombinant protein (Active) (His-tagged, C-ter).