

ARG70225 Human ACE2 recombinant protein (Human IgG1 Fc-tagged, C-ter)

Package: 20 µg
Store at: -20°C

Summary

Product Description	CHO expressed, Human IgG1 Fc-tagged (C-ter) Human ACE2 recombinant protein.
Tested Reactivity	Hu
Tested Application	SDS-PAGE
Target Name	ACE2
Species	Human
A.A. Sequence	QSTIE EQAKT FLDKF NHEAE DLFYQ SSLAS WNYNT NITEE NVQNM NNAGD KWSAF LKEQS TLAQM YPLQE IQNLT VKLQL QALQQ NGSSV LSEDK SKRLN TILNT MSTIY STGKV CNPDN PQECL LLEPG LNEIM ANSLD YNERL WAWES WRSEV GKQLR PLYEE YVVLK NEMAR ANHYE DYGDY WRGDY EVNGV DGYDY SRGQL IEDVE HTFEE IKPLY EHLHA YVRAK LMNAY PSYIS PIGCL PAHLL GDMWG RFWTN LYSLT VPFGQ KPNID VTDAM VDQAW DAQRI FKEAE KFFVS VGLPN MTQGF WENSM LTDPG NVQKA VCHPT AWDLG KGDFR ILMCT KVTMD DFLTA HHEMG HIQYD MAYAA QPFL RINGAN EGFHE AVGEI MSLSA ATPKH LKSIG LLSPD FQEDN ETEIN FLLKQ ALTIV GTLPF TYMLE KWRWM VFKGE IPKDQ WMKKW WEMKR EIVGV VEPVP HDETY CDPAS LFHVS NDYSF IRYYT RTLYQ FQFQE ALCQA AKHEG PLHKC DISNS TEAGQ KLFNM LRLGK SEPWT LALEN VVGAK NMNVR PLLNY FEPLF TWLKD QNKNS FVGWS TDWSP YADQS IKVRI SLKSA LGDKA YEWND NEMYL FRSSV AYAMR QYFLK VKNQM ILFGE EDVRV ANLKP RISFN FVTA PKNVS DIIPR TEVEK AIRMS RSRIN DAFRL NDNSL EFLGI QPTLG PPNQP PVS with Human IgG1 Fc tag at the C-terminus.
Expression System	CHO
Alternate Names	Angiotensin-converting enzyme homolog; ACEH; Angiotensin-converting enzyme 2; Metalloprotease MPROT15; ACE-related carboxypeptidase; EC 3.4.17.23

Properties

Form	Powder
Purification Note	Endotoxin level is less than 0.1 EU/µg of the protein, as determined by the LAL test.
Purity	> 98% (by SDS-PAGE)
Buffer	PBS (pH 7.4)
Reconstitution	It is recommended to reconstitute the lyophilized protein in sterile water to a concentration not less than 100 µg/ml and incubate the stock solution for at least 20 min at room temperature to make sure the protein is dissolved completely.
Storage instruction	Lyophilized protein should be stored at -20°C. After reconstitution, aliquot and store at -20°C or -80°C for up to one month. Storage in frost free freezers is not recommended. Avoid repeated freeze/thaw cycles. Suggest spin the vial prior to opening.
Note	For laboratory research only, not for drug, diagnostic or other use.

Bioinformation

Gene Symbol	ACE2
Gene Full Name	angiotensin I converting enzyme 2
Background	The protein encoded by this gene belongs to the angiotensin-converting enzyme family of dipeptidyl carboxydipeptidases and has considerable homology to human angiotensin 1 converting enzyme. This

secreted protein catalyzes the cleavage of angiotensin I into angiotensin 1-9, and angiotensin II into the vasodilator angiotensin 1-7. The organ- and cell-specific expression of this gene suggests that it may play a role in the regulation of cardiovascular and renal function, as well as fertility. In addition, the encoded protein is a functional receptor for the spike glycoprotein of the human coronaviruses SARS and HCoV-NL63. [provided by RefSeq, Jul 2008]

Function

Carboxypeptidase which converts angiotensin I to angiotensin 1-9, a peptide of unknown function, and angiotensin II to angiotensin 1-7, a vasodilator (PubMed:10969042, PubMed:10924499, PubMed:11815627). Also able to hydrolyze apelin-13 and dynorphin-13 with high efficiency (PubMed:11815627). By cleavage of angiotensin II, may be an important regulator of heart function (PubMed:10969042, PubMed:10924499). By cleavage of angiotensin II, may also have a protective role in acute lung injury (By similarity). Plays an important role in amino acid transport by acting as binding partner of amino acid transporter SL6A19 in intestine, regulating trafficking, expression on the cell surface, and its catalytic activity (PubMed:18424768, PubMed:19185582).

(Microbial infection) Acts as a receptor for SARS coronavirus/SARS-CoV.

(Microbial infection) Acts as a receptor for Human coronavirus NL63/HCoV-NL63. [UniProt]

Highlight

Related products:

[ACE2 antibodies](#); [ACE2 ELISA Kits](#); [ACE2 recombinant proteins](#);

Related news:

[HMGB1, a biomarker and therapeutic target in COVID-19](#)

Calculated Mw

92 kDa

PTM

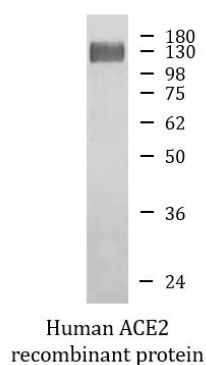
N-glycosylation on Asn-90 may limit SARS infectivity.

Proteolytic cleavage by ADAM17 generates a secreted form. Also cleaved by serine proteases: TMPRSS2, TMPRSS11D and HPN/TMPRSS1. [UniProt]

Cellular Localization

Processed angiotensin-converting enzyme 2: Secreted. Cell membrane; Single-pass type I membrane protein. Cytoplasm. Note=Detected in both cell membrane and cytoplasm in neurons. [UniProt]

Images



ARG70225 Human ACE2 recombinant protein (Human IgG1 Fc-tagged, C-ter) SDS-PAGE image

SDS-PAGE analysis of ARG70225 Human ACE2 recombinant protein (Human IgG1 Fc-tagged, C-ter).