

ARG70322

Human CD66e / CEA recombinant protein (ECD) (His-tagged, C-ter)

Package: 100 µg

Store at: -20°C

Summary

Product Description	HEK293 expressed, His-tagged (C-ter) Human CD66e / CEA recombinant protein (ECD).
Tested Reactivity	Hu
Tested Application	Binding, SDS-PAGE
Target Name	CD66e / CEA (ECD)
Species	Human
A.A. Sequence	Lys35 - Ala685 of Human CD66e / CEA (NP_004354.2) with 6X His tag at the C-terminus.
Expression System	HEK293
Alternate Names	Carcinoembryonic antigen-related cell adhesion molecule 5; CEA; CD66e; CD antigen CD66e; Carcinoembryonic antigen; Meconium antigen 100

Application Instructions

Application Note	Binding activity test: Measured by its binding ability in a functional ELISA. Immobilized Recombinant Human CEACAM5 at 5 µg/ml (100µl/well) can bind Recombinant Human CEACAM8 with a linear range of 0.5-3 µg/ml.
------------------	--

Properties

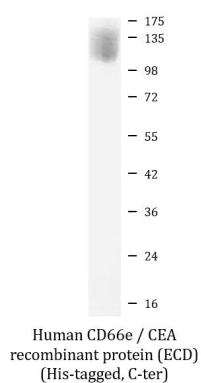
Form	Powder
Purification Note	0.22 µm filter sterilized. Endotoxin level is 95% (by SDS-PAGE)
Buffer	PBS (pH 7.4)
Reconstitution	Reconstitute to a concentration of 0.1 - 0.5 mg/ml in sterile distilled water.
Storage instruction	For long term, lyophilized protein should be stored at -20°C or -80°C. After reconstitution, aliquot and store at -20°C for up to one month, at 2-8°C for up to one week. Storage in frost free freezers is not recommended. Avoid repeated freeze/thaw cycles. Suggest spin the vial prior to opening.
Note	For laboratory research only, not for drug, diagnostic or other use.

Bioinformation

Gene Symbol	CEACAM5
Gene Full Name	carcinoembryonic antigen-related cell adhesion molecule 5
Background	This gene encodes a cell surface glycoprotein that represents the founding member of the carcinoembryonic antigen (CEA) family of proteins. The encoded protein is used as a clinical biomarker for gastrointestinal cancers and may promote tumor development through its role as a cell adhesion molecule. Additionally, the encoded protein may regulate differentiation, apoptosis, and cell polarity. This gene is present in a CEA family gene cluster on chromosome 19. Alternative splicing results in multiple transcript variants. [provided by RefSeq, Jul 2015]

Function	<p>Cell surface glycoprotein that plays a role in cell adhesion, intracellular signaling and tumor progression (PubMed:2803308, PubMed:10910050, PubMed:10864933). Mediates homophilic and heterophilic cell adhesion with other carcinoembryonic antigen-related cell adhesion molecules, such as CEACAM6 (PubMed:2803308). Plays a role as an oncogene by promoting tumor progression; induces resistance to anoikis of colorectal carcinoma cells (PubMed:10910050).</p> <p>(Microbial infection) Receptor for E.coli Dr adhesins. Binding of E.coli Dr adhesins leads to dissociation of the homodimer. [UniProt]</p>
Calculated Mw	77 kDa
PTM	Complex immunoreactive glycoprotein with a MW of 180 kDa comprising 60% carbohydrate. [UniProt]
Cellular Localization	Cell membrane; Lipid-anchor, GPI-anchor. [UniProt]

Images



ARG70322 Human CD66e / CEA recombinant protein (ECD) (His-tagged, C-ter) SDS-PAGE image

SDS-PAGE analysis of ARG70322 Human CD66e / CEA recombinant protein (ECD) (His-tagged, C-ter).