

## ARG70326

## Human Siglec 15 recombinant protein (Active) (ECD) (Fc-His-tagged, C-ter)

Package: 100 µg

Store at: -20°C

### Summary

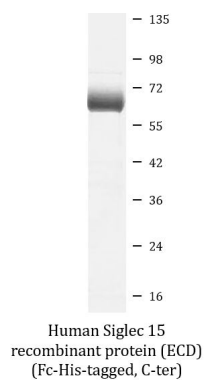
Product Description	HEK293 expressed, Fc-His-tagged (C-ter) Active Human Siglec 15 recombinant protein (ECD).
Tested Reactivity	Hu
Tested Application	FuncSt, SDS-PAGE
Target Name	Siglec 15 (ECD)
Species	Human
A.A. Sequence	Phe20 - Thr263 of Human Siglec 15 (NP_998767.1) with an Fc-6X His tag at the C-terminus.
Expression System	HEK293
Activity	Active
Activity Note	Measured by its ability to inhibit Anti-CD3-induced proliferation of Jurkat cells. The ED50 for this effect is 1.8-7.2 µg/ml.
Alternate Names	HsT1361; CD33 antigen-like 3; SIGLEC-15; CD33L3; Sialic acid-binding Ig-like lectin 15; Siglec-15

### Properties

Form	Powder
Purification Note	0.22 µm filter sterilized. Endotoxin level is 95% (by SDS-PAGE)
Buffer	PBS (pH 7.4) and 300 mM NaCl.
Reconstitution	Reconstitute to a concentration of 0.1 - 0.5 mg/ml in sterile distilled water.
Storage instruction	For long term, lyophilized protein should be stored at -20°C or -80°C. After reconstitution, aliquot and store at -20°C for up to one month, at 2-8°C for up to one week. Storage in frost free freezers is not recommended. Avoid repeated freeze/thaw cycles. Suggest spin the vial prior to opening.
Note	For laboratory research only, not for drug, diagnostic or other use.

### Bioinformation

Gene Symbol	SIGLEC15
Gene Full Name	sialic acid binding Ig-like lectin 15
Function	Binds sialylated glycoproteins. [UniProt]
Calculated Mw	36 kDa
Cellular Localization	Membrane; Single-pass type I membrane protein. [UniProt]



ARG70326 Human Siglec 15 recombinant protein (Active) (ECD) (Fc-His-tagged, C-ter) SDS-PAGE image

SDS-PAGE analysis of ARG70326 Human Siglec 15 recombinant protein (Active) (ECD) (Fc-His-tagged, C-ter).