

ARG70342 Human Siglec 15 recombinant protein (Active) (ECD) (His-tagged, C-ter)

Package: 100 µg

Store at: -20°C

Summary

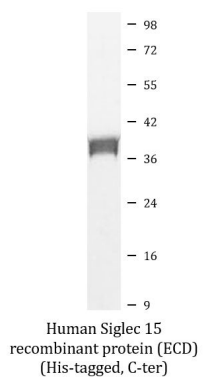
Product Description	HEK293 expressed, His-tagged (C-ter) Active Human Siglec 15 recombinant protein (ECD).
Tested Reactivity	Hu
Tested Application	FuncSt, SDS-PAGE
Target Name	Siglec 15 (ECD)
Species	Human
A.A. Sequence	Phe20 - Thr263 of Human Siglec 15 (NP_998767.1) with 6X His tag at the C-terminus.
Expression System	HEK293
Activity	Active
Activity Note	Measured by its ability to inhibit Anti-CD3-induced proliferation of Jurkat cells. The ED50 for this effect is 4.99-19.98 µg/ml.
Alternate Names	HsT1361; CD33 antigen-like 3; SIGLEC-15; CD33L3; Sialic acid-binding Ig-like lectin 15; Siglec-15

Properties

Form	Powder
Purification Note	0.22 µm filter sterilized. Endotoxin level is 95% (by SDS-PAGE)
Buffer	PBS (pH 7.4) and 300 mM NaCl.
Reconstitution	Reconstitute to a concentration of 0.1 - 0.5 mg/ml in sterile distilled water.
Storage instruction	For long term, lyophilized protein should be stored at -20°C or -80°C. After reconstitution, aliquot and store at -20°C for up to one month, at 2-8°C for up to one week. Storage in frost free freezers is not recommended. Avoid repeated freeze/thaw cycles. Suggest spin the vial prior to opening.
Note	For laboratory research only, not for drug, diagnostic or other use.

Bioinformation

Gene Symbol	SIGLEC15
Gene Full Name	sialic acid binding Ig-like lectin 15
Function	Binds sialylated glycoproteins. [UniProt]
Calculated Mw	36 kDa
Cellular Localization	Membrane; Single-pass type I membrane protein. [UniProt]



ARG70342 Human Siglec 15 recombinant protein (Active) (ECD) (His-tagged, C-ter) SDS-PAGE image

SDS-PAGE analysis of ARG70342 Human Siglec 15 recombinant protein (Active) (ECD) (His-tagged, C-ter).