

## ARG70415 Human SCF recombinant protein (Active) (His-tagged, C-ter)

Package: 100 µg, 20 µg  
Store at: -20°C

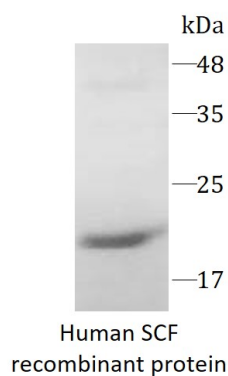
### Summary

Product Description	E. coli expressed, His-tagged (C-ter) Active Human SCF recombinant protein
Tested Application	SDS-PAGE
Target Name	SCF
Species	Human
A.A. Sequence	Glu26 - Ala189
Expression System	E. coli
Activity	Active
Alternate Names	KITLG; KIT Ligand; SCF; Mast Cell Growth Factor; Stem Cell Factor; DFNA69; Kitl; KL-1 FPH2; SLF 2; MGF; SF; Familial Progressive Hyperpigmentation 2; Steel Factor; C-Kit Ligand; Kit Ligand; SHEP7; CUA; FP HH; WS2F

### Properties

Form	Powder
Purification Note	Endotoxin level is < 0.1 EU/µg of the protein, as determined by the LAL test.
Purity	> 98% (by SDS-PAGE)
Buffer	PBS (pH 7.4)
Reconstitution	

### Images



ARG70415 Human SCF recombinant protein (Active) (His-tagged, C-ter) SDS-PAGE image

SDS-PAGE analysis of ARG70415 Human SCF recombinant protein (Active) (His-tagged, C-ter)