

ARG70515
Influenza A Virus H1N1 Hemagglutinin (A/Puerto Rico/8/1934)
Recombinant Protein (His-tagged, C-ter)

Package: 100 µg
Store at: -20°C

Summary

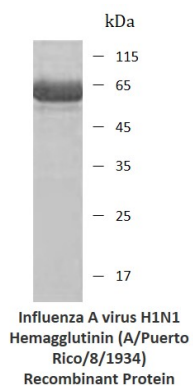
Product Description	Baculovirus-Insect expressed, His-tagged (C-ter) Influenza A Virus H1N1 Hemagglutinin (A/Puerto Rico/8/1934).
Tested Application	SDS-PAGE
Target Name	Influenza A Virus H1N1 Hemagglutinin
Species	Virus
Expression System	Insect

Properties

Form	Powder
Purity	> 95% (by SDS-PAGE)
Buffer	20 mM Tris (pH 8.0), 500 mM NaCl, 0.1 mM EDTA and 10% Glycerol.
Stabilizer	10% Glycerol
Reconstitution	Reconstitute to a concentration of 0.1 - 0.5 mg/ml in sterile distilled water.
Storage instruction	For long term, lyophilized protein should be stored at -20°C or -80°C. After reconstitution, aliquot and store at -20°C for up to one month, at 2-8°C for up to one week. Storage in frost free freezers is not recommended. Avoid repeated freeze/thaw cycles. Suggest spin the vial prior to opening.
Note	For laboratory research only, not for drug, diagnostic or other use.

Bioinformation

Background	In virology, influenza A virus subtype H1N1 (A/H1N1) is a subtype of influenza A virus. Major outbreaks of H1N1 strains in humans include the Spanish flu, the 1977 Russian flu pandemic and the 2009 swine flu pandemic. It is an orthomyxovirus that contains the glycoproteins hemagglutinin and neuraminidase. For this reason, they are described as H1N1, H1N2 etc., depending on the type of H or N antigens they express with metabolic synergy. Hemagglutinin causes red blood cells to clump together and binds the virus to the infected cell. Neuraminidase is a type of glycoside hydrolase enzyme which helps to move the virus particles through the infected cell and assist in budding from the host cells.
------------	--



ARG70515 Influenza A virus H1N1 Hemagglutinin (A/Puerto Rico/8/1934) Recombinant Protein (His-tagged, C-ter) SDS-PAGE image

SDS-PAGE analysis of Influenza A virus H1N1 Hemagglutinin (A/Puerto Rico/8/1934) Recombinant Protein (His-tagged, C-ter)