

## ARG80122 Human GM-CSF ELISA Kit

Package: 96 wells  
Store at: 4°C

### Component

Cat. No.	Component Name	Package	Temp
ARG80122-001	Antibody-coated microplate	8 X 12 strips	4°C. Unused strips should be sealed tightly in the air-tight pouch.
ARG80122-002	Standard (Lyophilized)	2 X 1 ng/vial	4°C
ARG80122-003	Standard diluent buffer	20 ml	4°C
ARG80122-004	Antibody conjugate concentrate	400 µl	4°C
ARG80122-005	Antibody diluent buffer	16 ml	4°C
ARG80122-006	HRP-Streptavidin concentrate	400 µl	4°C (Protect from light)
ARG80122-007	HRP-Streptavidin diluent buffer	16 ml	4°C
ARG80122-008	20X Wash buffer	50 ml	4°C
ARG80122-009	TMB substrate	12ml	4°C (Protect from light)
ARG80122-010	STOP solution	12ml	4°C
ARG80122-011	Plate sealer	4 strips	Room temperature

### Summary

Product Description	ARG80122 Human GM-CSF ELISA Kit is an Enzyme Immunoassay kit for the quantification of Human GM-CSF in Serum, Plasma, Cell culture supernatants.
Tested Reactivity	Hu
Tested Application	ELISA
Specificity	No significant cross-reactivity or interference with Human GM-CSF, IL-3 R alpha, IL-5 R alpha, M-CSF, mouse GM-CSF, rat GM-CSF
Target Name	GM-CSF
Conjugation	HRP
Conjugation Note	Substrate: TMB and read at 450 nm
Sensitivity	8 pg/ml
Sample Type	Serum, Plasma, Cell culture supernatants
Standard Range	15.6 - 1000 pg/ml

Sample Volume	100 µl
Precision	CV: less than 10%
Alternate Names	GM-CSF; Granulocyte-macrophage colony-stimulating factor; CSF; GMCSF; Molgramostin; Colony-stimulating factor; Sargramostim

## Application Instructions

---

Assay Time	4 hours
------------	---------

## Properties

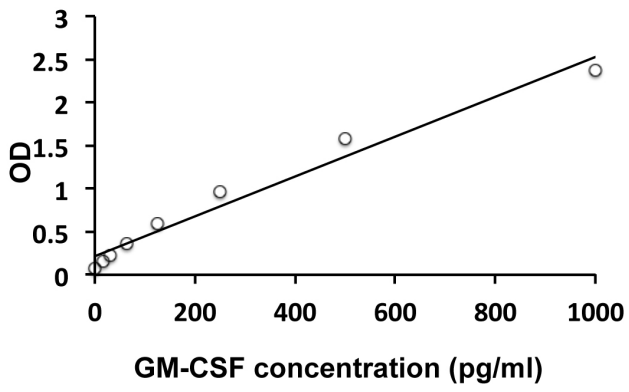
---

Form	96 well
Storage instruction	Store the kit at 2-8°C. Keep microplate wells sealed in a dry bag with desiccants. Do not expose test reagents to heat, sun or strong light during storage and usage. Please refer to the product user manual for detail temperatures of the components.
Note	For laboratory research only, not for drug, diagnostic or other use.

## Bioinformation

---

Gene Symbol	Csf2
Gene Full Name	colony stimulating factor 2 (granulocyte-macrophage)
Background	The protein encoded by this gene is a cytokine that controls the production, differentiation, and function of granulocytes and macrophages. The active form of the protein is found extracellularly as a homodimer. This gene has been localized to a cluster of related genes at chromosome region 5q31, which is known to be associated with interstitial deletions in the 5q- syndrome and acute myelogenous leukemia. Other genes in the cluster include those encoding interleukins 4, 5, and 13. [provided by RefSeq, Jul 2008]
Function	Cytokine that stimulates the growth and differentiation of hematopoietic precursor cells from various lineages, including granulocytes, macrophages, eosinophils and erythrocytes. [UniProt]
Highlight	<p>Related products:  <a href="#">GM-CSF antibodies</a>; <a href="#">GM-CSF ELISA Kits</a>; <a href="#">GM-CSF Duos / Panels</a>; <a href="#">GM-CSF recombinant proteins</a>;</p> <p>Related news:  <a href="#">HMGB1 in inflammation</a>  <a href="#">Inflammatory Cytokines</a></p> <p>New ELISA data calculation tool:  <a href="#">Simplify the ELISA analysis by GainData</a></p>
Research Area	Immune System kit



ARG80122 Human GM-CSF ELISA Kit standard curve image

ARG80122 Human GM-CSF ELISA Kit results of a typical standard run with optical density reading at 450 nm.