

ARG80128 Human CCL2 / MCP1 ELISA Kit

Package: 96 wells
Store at: 4°C

Component

Cat. No.	Component Name	Package	Temp
ARG80128-001	Antibody-coated microplate	8 X 12 strips	4°C. Unused strips should be sealed tightly in the air-tight pouch.
ARG80128-002	Standard (Lyophilized)	3 X 1 ng/vial	4°C
ARG80128-003	Standard diluent buffer	20 ml	4°C
ARG80128-004	Antibody conjugate concentrate	400 µl	4°C
ARG80128-005	Antibody diluent buffer	16 ml	4°C
ARG80128-006	HRP-Streptavidin concentrate	400 µl	4°C (Protect from light)
ARG80128-007	HRP-Streptavidin diluent buffer	16 ml	4°C
ARG80128-008	20X Wash buffer	50 ml	4°C
ARG80128-009	TMB substrate	12ml	4°C (Protect from light)
ARG80128-010	STOP solution	12ml	4°C
ARG80128-011	Plate sealer	4 strips	Room temperature

Summary

Product Description	ARG80128 Human CCL2 / MCP1 ELISA Kit is an Enzyme Immunoassay kit for the quantification of Human MCP-1 / CCL2 in serum, plasma and cell culture supernatants.
Tested Reactivity	Hu
Tested Application	ELISA
Specificity	No significant cross-reactivity or interference with Human CXCL-16, MCP-2, MIP-1 alpha, MIP-1 beta, RANTES, GRO/MGSA, GRO gamma, GRO beta, IL-8; Mouse MIP-1 alpha, MIP-1 beta.
Target Name	CCL2 / MCP1
Conjugation	HRP
Conjugation Note	Substrate: TMB and read at 450 nm
Sensitivity	8 pg/ml
Sample Type	Serum, plasma and cell culture supernatants.
Standard Range	15.6 - 1000 pg/ml

Sample Volume	100 µl
Precision	CV: less than 10%
Alternate Names	MCP1; Monocyte chemotactic and activating factor; MCAF; Monocyte chemotactic protein 1; Monocyte secretory protein JE; HSMCR30; Small-inducible cytokine A2; HC11; SMC-CF; GDCF-2; SCYA2; C-C motif chemokine 2; Monocyte chemoattractant protein 1; MCP-1

Application Instructions

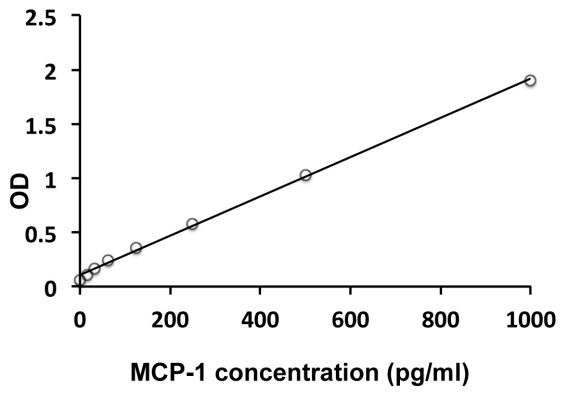
Assay Time	4 hours
------------	---------

Properties

Form	96 well
Storage instruction	Store the kit at 2-8°C. Keep microplate wells sealed in a dry bag with desiccants. Do not expose test reagents to heat, sun or strong light during storage and usage. Please refer to the product user manual for detail temperatures of the components.
Note	For laboratory research only, not for drug, diagnostic or other use.

Bioinformation

Gene Symbol	CCL2
Gene Full Name	chemokine (C-C motif) ligand 2
Background	This gene is one of several cytokine genes clustered on the q-arm of chromosome 17. Chemokines are a superfamily of secreted proteins involved in immunoregulatory and inflammatory processes. The superfamily is divided into four subfamilies based on the arrangement of N-terminal cysteine residues of the mature peptide. This chemokine is a member of the CC subfamily which is characterized by two adjacent cysteine residues. This cytokine displays chemotactic activity for monocytes and basophils but not for neutrophils or eosinophils. It has been implicated in the pathogenesis of diseases characterized by monocytic infiltrates, like psoriasis, rheumatoid arthritis and atherosclerosis. It binds to chemokine receptors CCR2 and CCR4. [provided by RefSeq, Jul 2013]
Function	Chemotactic factor that attracts monocytes and basophils but not neutrophils or eosinophils. Augments monocyte anti-tumor activity. Has been implicated in the pathogenesis of diseases characterized by monocytic infiltrates, like psoriasis, rheumatoid arthritis or atherosclerosis. May be involved in the recruitment of monocytes into the arterial wall during the disease process of atherosclerosis. [UniProt]
Highlight	<p>Related products: MCP1 antibodies; MCP1 ELISA Kits; MCP1 Duos / Panels;</p> <p>Related news: HMGB1 in inflammation Inflammatory Cytokines Detecting MMPs and their non-ECM substrates</p> <p>New ELISA data calculation tool: Simplify the ELISA analysis by GainData</p>
Research Area	Cancer kit; Cell Biology and Cellular Response kit; Immune System kit; Metabolism kit
PTM	Processing at the N-terminus can regulate receptor and target cell selectivity. Deletion of the N-terminal residue converts it from an activator of basophil to an eosinophil chemoattractant.



ARG80128 Human CCL2 / MCP1 ELISA Kit standard curve image

ARG80128 Human CCL2 / MCP1 ELISA Kit results of a typical standard run with optical density reading at 450 nm.