

ARG80135 Human IgG (Total) ELISA Kit

Package: 96 wells
Store at: 4°C

Component

Cat. No.	Component Name	Package	Temp
ARG80135-001	Antibody-coated microplate	8 X 12 strips	4°C. Unused strips should be sealed tightly in the air-tight pouch.
ARG80135-002	Standard (Lyophilized)	3 X 30 ng/vial	4°C
ARG80135-003	Standard diluent buffer	40 ml	4°C
ARG80135-004	Antibody concentrate	400 µl	4°C
ARG80135-005	Antibody diluent buffer	16 ml	4°C
ARG80135-006	20X Wash buffer	50 ml	4°C
ARG80135-007	TMB substrate	12ml	4°C (Protect from light)
ARG80135-008	STOP solution	12ml	4°C
ARG80135-009	Plate sealer	4 strips	Room temperature

Summary

Product Description	ARG80135 Human IgG (Total) ELISA Kit is an Enzyme Immunoassay kit for the quantification of Human IgG (Total) in Serum, Plasma, Cell culture supernatants.
Tested Reactivity	Hu
Tested Application	ELISA
Specificity	No significant cross-reactivity or interference with other soluble cytokine
Target Name	IgG
Conjugation	HRP
Conjugation Note	Substrate: TMB and read at 450 nm
Sensitivity	0.4 ng/ml
Sample Type	Serum, Plasma, Cell culture supernatants
Standard Range	0.78 - 50 ng/ml
Sample Volume	100 µl
Precision	CV: less than 10%
Alternate Names	Immunoglobulin G

Application Instructions

Assay Time 4 hours

Properties

Form 96 well

Storage instruction Store the kit at 2-8°C. Keep microplate wells sealed in a dry bag with desiccants. Do not expose test reagents to heat, sun or strong light during storage and usage. Please refer to the product user manual for detail temperatures of the components.

Note For laboratory research only, not for drug, diagnostic or other use.

Bioinformation

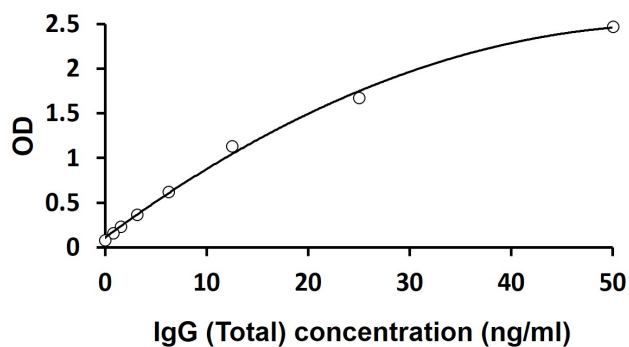
Gene Symbol IGHG1

Gene Full Name immunoglobulin heavy constant gamma 1 (G1m marker)

Highlight Related products:
[IgG antibodies](#); [IgG ELISA Kits](#); [IgG Duos / Panels](#); [IgG recombinant proteins](#);
New ELISA data calculation tool:
[Simplify the ELISA analysis by GainData](#)

Research Area Controls and Markers kit; Gene Regulation kit; Immune System kit

Images



ARG80135 Human IgG (Total) ELISA Kit standard curve image

ARG80135 Human IgG (Total) ELISA Kit results of a typical standard run with optical density reading at 450 nm.