

## ARG80157 Human IGFBP1 ELISA Kit

Package: 96 wells  
Store at: 4°C

### Component

Cat. No.	Component Name	Package	Temp
ARG80157-001	Antibody-coated microplate	8 X 12 strips	4°C. Unused strips should be sealed tightly in the air-tight pouch.
ARG80157-002	Standard (Lyophilized)	5 X 0.75 ng/vial	4°C
ARG80157-003	Standard diluent buffer	20 ml	4°C
ARG80157-004	Antibody conjugate concentrate	400 µl	4°C
ARG80157-005	Antibody diluent buffer	16 ml	4°C
ARG80157-006	HRP-Streptavidin concentrate	400 µl	4°C (Protect from light)
ARG80157-007	HRP-Streptavidin diluent buffer	16 ml	4°C
ARG80157-008	20X Wash buffer	50 ml	4°C
ARG80157-009	TMB substrate	12ml	4°C (Protect from light)
ARG80157-010	STOP solution	12ml	4°C
ARG80157-011	Plate sealer	4 strips	Room temperature

### Summary

Product Description	ARG80157 Human IGFBP1 ELISA Kit is an Enzyme Immunoassay kit for the quantification of Human IGFBP1 in Serum, Plasma, Cell culture supernatants.
Tested Reactivity	Hu
Tested Application	ELISA
Target Name	IGFBP1
Conjugation	HRP
Conjugation Note	Substrate: TMB and read at 450 nm
Sensitivity	25 pg/ml
Sample Type	Serum, Plasma, Cell culture supernatants
Standard Range	46.8 - 3000 pg/ml
Sample Volume	100 µl
Precision	CV: less than 10%

**Alternate Names** IBP-1; IBP1; PP12; IGF-BP25; Insulin-like growth factor-binding protein 1; hIGFBP-1; IGFBP-1; Placental protein 12; AFBP; IGF-binding protein 1

## Application Instructions

---

**Assay Time** 4 hours

## Properties

---

**Form** 96 well

**Storage instruction** Store the kit at 2-8°C. Keep microplate wells sealed in a dry bag with desiccants. Do not expose test reagents to heat, sun or strong light during storage and usage. Please refer to the product user manual for detail temperatures of the components.

**Note** For laboratory research only, not for drug, diagnostic or other use.

## Bioinformation

---

**Gene Symbol** IGFBP1

**Gene Full Name** insulin-like growth factor binding protein 1

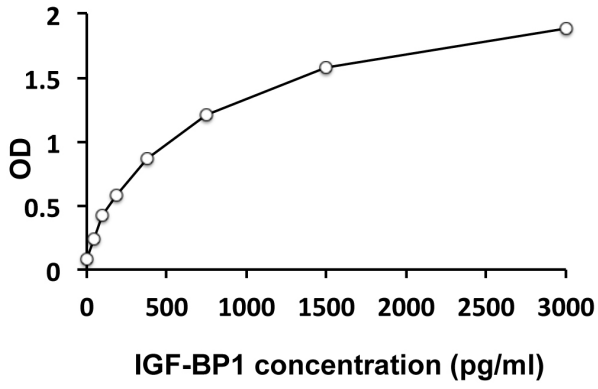
**Background** This gene is a member of the insulin-like growth factor binding protein (IGFBP) family and encodes a protein with an IGFBP domain and a thyroglobulin type-I domain. The protein binds both insulin-like growth factors (IGFs) I and II and circulates in the plasma. Binding of this protein prolongs the half-life of the IGFs and alters their interaction with cell surface receptors. [provided by RefSeq, Jul 2008]

**Function** IGF-binding proteins prolong the half-life of the IGFs and have been shown to either inhibit or stimulate the growth promoting effects of the IGFs on cell culture. They alter the interaction of IGFs with their cell surface receptors. Promotes cell migration. [UniProt]

**Highlight** Related products:  
[IGFBP1 antibodies](#); [IGFBP1 ELISA Kits](#);  
Related news:  
[Detecting MMPs and their non-ECM substrates](#)  
New ELISA data calculation tool:  
[Simplify the ELISA analysis by GainData](#)

**Research Area** Cell Biology and Cellular Response kit; Signaling Transduction kit

**PTM** Phosphorylated; probably by casein kinase II. Phosphorylation alters the affinity of the protein for IGFs. In amniotic fluid, the unmodified protein is the most abundant form, while mono-, bi-, tri- and tetraphosphorylated forms are present in decreasing amounts. The phosphorylation state may influence the propensity to proteolysis.



ARG80157 Human IGF-BP1 ELISA Kit standard curve image

ARG80157 Human IGF-BP1 ELISA Kit results of a typical standard run with optical density reading at 450 nm.