

## ARG80180 Human CCL8 / MCP2ELISA Kit

Package: 96 wells  
Store at: 4°C

### Component

Cat. No.	Component Name	Package	Temp
ARG80180-001	Antibody-coated microplate	8 X 12 strips	4°C. Unused strips should be sealed tightly in the air-tight pouch.
ARG80180-002	Standard (Lyophilized)	3 X 1 ng/vial	4°C
ARG80180-003	Standard diluent buffer	20 ml	4°C
ARG80180-004	Antibody conjugate concentrate	400 µl	4°C
ARG80180-005	Antibody diluent buffer	16 ml	4°C
ARG80180-006	HRP-Streptavidin concentrate	400 µl	4°C (Protect from light)
ARG80180-007	HRP-Streptavidin diluent buffer	16 ml	4°C
ARG80180-008	20X Wash buffer	50 ml	4°C
ARG80180-009	TMB substrate	12ml	4°C (Protect from light)
ARG80180-010	STOP solution	12ml	4°C
ARG80180-011	Plate sealer	4 strips	Room temperature

### Summary

Product Description	ARG80180 Human CCL8 / MCP2 ELISA Kit is an Enzyme Immunoassay kit for the quantification of Human CCL8 / MCP2 in Serum, Plasma, Cell culture supernatants.
Tested Reactivity	Hu
Tested Application	ELISA
Specificity	No significant cross-reactivity or interference with Human HCC-1, MCP-3, MCP-1, MIP-1 alpha
Target Name	CCL8 / MCP2
Conjugation	HRP
Conjugation Note	Substrate: TMB and read at 450 nm
Sensitivity	1.56 pg/ml
Sample Type	Serum, Plasma, Cell culture supernatants
Standard Range	3.125 - 200 pg/ml
Sample Volume	100 µl

Precision	CV: less than10%
Alternate Names	SCYA10; MCP2; Small-inducible cytokine A8; 6-76; Monocyte chemotactic protein 2; HC14; SCYA8; C-C motif chemokine 8; MCP-2; Monocyte chemoattractant protein 2

## Application Instructions

---

Assay Time	4 hours
------------	---------

## Properties

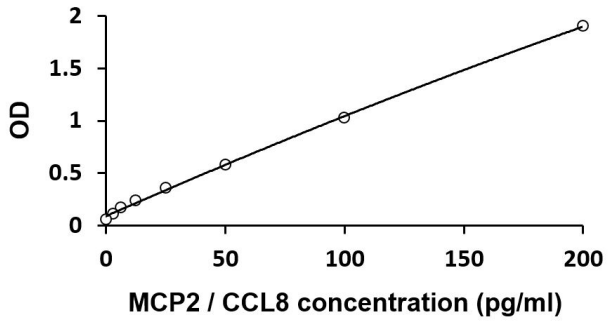
---

Form	96 well
Storage instruction	Store the kit at 2-8°C. Keep microplate wells sealed in a dry bag with desiccants. Do not expose test reagents to heat, sun or strong light during storage and usage. Please refer to the product user manual for detail temperatures of the components.
Note	For laboratory research only, not for drug, diagnostic or other use.

## Bioinformation

---

Database links	<a href="#">GeneID: 6355 Human</a> <a href="#">Swiss-port # P80075 Human</a>
Gene Symbol	CCL8
Gene Full Name	chemokine (C-C motif) ligand 8
Background	This gene is one of several cytokine genes clustered on the q-arm of chromosome 17. Cytokines are a family of secreted proteins involved in immunoregulatory and inflammatory processes. The protein encoded by this gene is structurally related to the CXC subfamily of cytokines. Members of this subfamily are characterized by two cysteines separated by a single amino acid. This cytokine displays chemotactic activity for monocytes, lymphocytes, basophils and eosinophils. By recruiting leukocytes to sites of inflammation this cytokine may contribute to tumor-associated leukocyte infiltration and to the antiviral state against HIV infection. [provided by RefSeq]
Highlight	<p>Related products:  <a href="#">CCL8 antibodies</a>; <a href="#">CCL8 ELISA Kits</a>;</p> <p>Related news:  <a href="#">Detecting MMPs and their non-ECM substrates</a></p> <p>New ELISA data calculation tool:  <a href="#">Simplify the ELISA analysis by GainData</a></p>
Research Area	Immune System kit
PTM	N-terminal processed form MCP-2(6-76) is produced by proteolytic cleavage after secretion from peripheral blood monocytes.



ARG80180 Human MCP2 / CCL8 ELISA Kit standard curve image

ARG80180 Human MCP2 / CCL8 ELISA Kit results of a typical standard run with optical density reading at 450 nm.