

ARG80187 Human TIMP1 ELISA Kit

Package: 96 wells
Store at: 4°C

Component

Cat. No.	Component Name	Package	Temp
ARG80187-001	Antibody-coated microplate	8 X 12 strips	4°C. Unused strips should be sealed tightly in the air-tight pouch.
ARG80187-002	Standard (Lyophilized)	2 X 1 ng/vial	4°C
ARG80187-003	Standard diluent buffer	20 ml	4°C
ARG80187-004	Antibody conjugate concentrate	400 µl	4°C
ARG80187-005	Antibody diluent buffer	16 ml	4°C
ARG80187-006	HRP-Streptavidin concentrate	400 µl	4°C (Protect from light)
ARG80187-007	HRP-Streptavidin diluent buffer	16 ml	4°C
ARG80187-008	20X Wash buffer	50 ml	4°C
ARG80187-009	TMB substrate	12ml	4°C (Protect from light)
ARG80187-010	STOP solution	12ml	4°C
ARG80187-011	Plate sealer	4 strips	Room temperature

Summary

Product Description	ARG80187 Human TIMP1 ELISA Kit is an Enzyme Immunoassay kit for the quantification of Human TIMP1 in Serum, Plasma, Cell culture supernatants.
Tested Reactivity	Hu
Tested Application	ELISA
Specificity	No significant cross-reactivity or interference with Human MMP-1, MMP-3, MMP-2, TIMP-2 mouse TIMP-1
Target Name	TIMP1
Conjugation	HRP
Conjugation Note	Substrate: TMB and read at 450 nm
Sensitivity	16 pg/ml
Sample Type	Serum, Plasma, Cell culture supernatants
Standard Range	31.25 - 2000 pg/ml

Sample Volume	100 µl
Precision	CV: less than 10%
Alternate Names	Erythroid-potentiating activity; TIMP; Collagenase inhibitor; Fibroblast collagenase inhibitor; TIMP-1; EPO; CLGI; Tissue inhibitor of metalloproteinases 1; HCl; Metalloproteinase inhibitor 1; EPA

Application Instructions

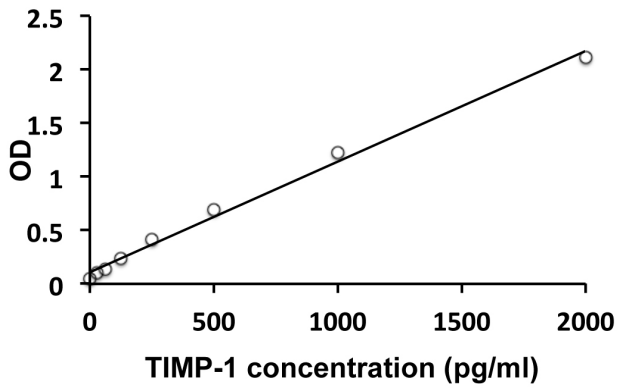
Assay Time	4 hours
------------	---------

Properties

Form	96 well
Storage instruction	Store the kit at 2-8°C. Keep microplate wells sealed in a dry bag with desiccants. Do not expose test reagents to heat, sun or strong light during storage and usage. Please refer to the product user manual for detail temperatures of the components.
Note	For laboratory research only, not for drug, diagnostic or other use.

Bioinformation

Database links	GeneID: 7076 Human Swiss-port # P01033 Human
Gene Symbol	TIMP1
Gene Full Name	TIMP metalloproteinase inhibitor 1
Background	This gene belongs to the TIMP gene family. The proteins encoded by this gene family are natural inhibitors of the matrix metalloproteinases (MMPs), a group of peptidases involved in degradation of the extracellular matrix. In addition to its inhibitory role against most of the known MMPs, the encoded protein is able to promote cell proliferation in a wide range of cell types, and may also have an anti-apoptotic function. Transcription of this gene is highly inducible in response to many cytokines and hormones. In addition, the expression from some but not all inactive X chromosomes suggests that this gene inactivation is polymorphic in human females. This gene is located within intron 6 of the synapsin I gene and is transcribed in the opposite direction. [provided by RefSeq]
Highlight	Related products: TIMP1 antibodies ; TIMP1 ELISA Kits ; Related news: Detecting MMPs and their non-ECM substrates New ELISA data calculation tool: Simplify the ELISA analysis by GainData
Research Area	Cancer kit; Cell Biology and Cellular Response kit; Signaling Transduction kit
PTM	The activity of TIMP1 is dependent on the presence of disulfide bonds. N-glycosylated.



ARG80187 Human TIMP1 ELISA Kit standard curve image

ARG80187 Human TIMP1 ELISA Kit results of a typical standard run with optical density reading at 450 nm.