

ARG80215 Mouse IgG (Total) ELISA Kit

Package: 96 wells
Store at: 4°C

Component

Cat. No.	Component Name	Package	Temp
ARG80215-001	Antibody-coated microplate	8 X 12 strips	4°C. Unused strips should be sealed tightly in the air-tight pouch.
ARG80215-002	Standard (Lyophilized)	3 X 10 ng/vial	4°C
ARG80215-003	Standard diluent buffer	40 ml	4°C
ARG80215-004	Antibody conjugate concentrate	400 µl	4°C
ARG80215-005	Antibody diluent buffer	16 ml	4°C
ARG80215-006	HRP-Streptavidin concentrate	400 µl	4°C (Protect from light)
ARG80215-007	HRP-Streptavidin diluent buffer	16 ml	4°C
ARG80215-008	20X Wash buffer	50 ml	4°C
ARG80215-009	TMB substrate	12ml	4°C (Protect from light)
ARG80215-010	STOP solution	12ml	4°C
ARG80215-011	Plate sealer	4 strips	Room temperature

Summary

Product Description	ARG80215 Mouse IgG (Total) ELISA Kit is an Enzyme Immunoassay kit for the quantification of Mouse IgG (Total) in Serum, Plasma, Cell culture supernatants.
Tested Reactivity	Ms
Tested Application	ELISA
Specificity	This ELISA kit might cross-react with IgG from other species.
Target Name	IgG (Total)
Conjugation	HRP
Conjugation Note	Substrate: TMB and read at 450 nm
Sensitivity	0.08 ng/ml
Sample Type	Serum, Plasma, Cell culture supernatants
Standard Range	0.156 - 10 ng/ml
Sample Volume	100 µl

Precision	CV: less than10%
Alternate Names	Immunoglobulin G

Application Instructions

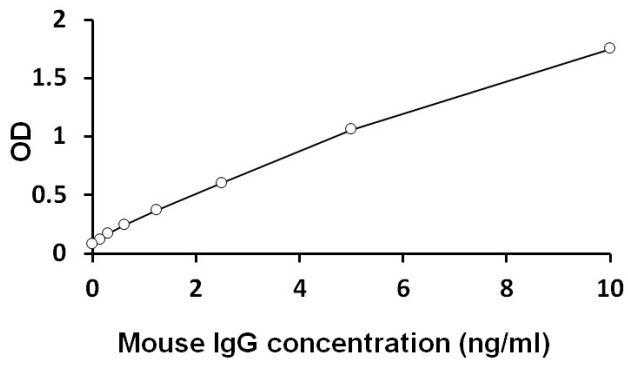
Assay Time	4 hours
------------	---------

Properties

Form	96 well
Storage instruction	Store the kit at 2-8°C. Keep microplate wells sealed in a dry bag with desiccants. Do not expose test reagents to heat, sun or strong light during storage and usage. Please refer to the product user manual for detail temperatures of the components.
Note	For laboratory research only, not for drug, diagnostic or other use.

Bioinformation

Background	<p>Antibodies are major components of the immune system. IgG is the main antibody isotype found in blood and extracellular fluid allowing it to control infection of body tissues. By binding many kinds of pathogens—representing viruses, bacteria, and fungi—IgG protects the body from infection. It does this via several immune mechanisms: IgG-mediated binding of pathogens causes their immobilization and binding together via agglutination; IgG coating of pathogen surfaces (known as opsonization) allows their recognition and ingestion by phagocytic immune cells; IgG activates the classical pathway of the complement system, a cascade of immune protein production that results in pathogen elimination; IgG also binds and neutralizes toxins. IgG also plays an important role in antibody-dependent cell-mediated cytotoxicity (ADCC) and intracellular antibody-mediated proteolysis, in which it binds to TRIM21 (the receptor with greatest affinity to IgG in humans) in order to direct marked virions to the proteasome in the cytosol. IgG is also associated with Type II and Type III Hypersensitivity. IgG antibodies are generated following class switching and maturation of the antibody response and thus participate predominantly in the secondary immune response. IgG is secreted as a monomer that is small in size allowing it to easily perfuse tissues. It is the only isotype that has receptors to facilitate passage through the human placenta, thereby providing protection to the fetus in utero. Along with IgA secreted in the breast milk, residual IgG absorbed through the placenta provides the neonate with humoral immunity before its own immune system develops. Colostrum contains a high percentage of IgG, especially bovine colostrum. In individuals with prior immunity to a pathogen, IgG appears about 24–48 hours after antigenic stimulation.</p>
Highlight	<p>Related products: IgG antibodies; IgG ELISA Kits; IgG Duos / Panels; IgG recombinant proteins; New ELISA data calculation tool: Simplify the ELISA analysis by GainData</p>
Research Area	Immune System kit



ARG80215 Mouse IgG (Total) ELISA Kit standard curve image

ARG80215 Mouse IgG (Total) ELISA Kit results of a typical standard run with optical density reading at 450 nm.