

ARG80218 Mouse IL22 ELISA Kit

Package: 96 wells
Store at: 4°C

Component

Cat. No.	Component Name	Package	Temp
ARG80218-001	Antibody-coated microplate	8 X 12 strips	4°C. Unused strips should be sealed tightly in the air-tight pouch.
ARG80218-002	Standard (Lyophilized)	3 X 3 ng/vial	4°C
ARG80218-003	Standard diluent buffer	20 ml	4°C
ARG80218-004	Antibody conjugate concentrate	400 µl	4°C
ARG80218-005	Antibody diluent buffer	16 ml	4°C
ARG80218-006	HRP-Streptavidin concentrate	400 µl	4°C (Protect from light)
ARG80218-007	HRP-Streptavidin diluent buffer	16 ml	4°C
ARG80218-008	20X Wash buffer	50 ml	4°C
ARG80218-009	TMB substrate	12ml	4°C (Protect from light)
ARG80218-010	STOP solution	12ml	4°C
ARG80218-011	Plate sealer	4 strips	Room temperature

Summary

Product Description	ARG80218 Mouse IL22 ELISA Kit is an Enzyme Immunoassay kit for the quantification of Mouse IL22 in Serum, Plasma, Cell culture supernatants.
Tested Reactivity	Ms
Tested Application	ELISA
Specificity	No significant cross-reactivity or interference with Mouse IL-4, IL-10, human IL-4, IL-10, sIL-4R-alpha, IL-19, IL-20, IL-24, IL-23, rat IL-4, IL-10
Target Name	IL22
Conjugation	HRP
Conjugation Note	Substrate: TMB and read at 450 nm
Sensitivity	24 pg/ml
Sample Type	Serum, Plasma, Cell culture supernatants
Standard Range	46.88 - 3000 pg/ml

Sample Volume	100 µl
Precision	CV: less than10%
Alternate Names	Interleukin-22; zcyto18; IL-TIF; IL-22; IL-21; IL-D110; TIFa; ILTIF; TIFIL-23; IL-10-related T-cell-derived-inducible factor; Cytokine Zcyto18

Application Instructions

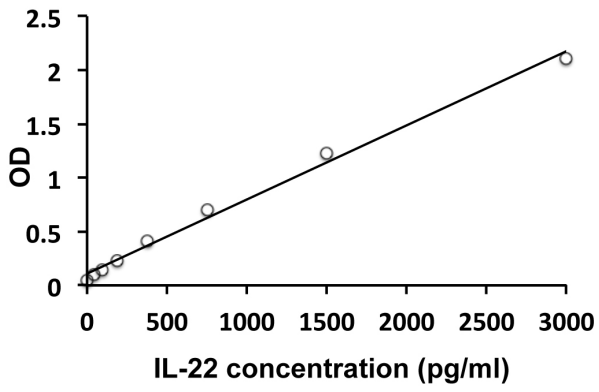
Assay Time	4 hours
------------	---------

Properties

Form	96 well
Storage instruction	Store the kit at 2-8°C. Keep microplate wells sealed in a dry bag with desiccants. Do not expose test reagents to heat, sun or strong light during storage and usage. Please refer to the product user manual for detail temperatures of the components.
Note	For laboratory research only, not for drug, diagnostic or other use.

Bioinformation

Database links	GeneID: 50929 Mouse Swiss-port # Q9JJY9 Mouse
Gene Symbol	IL22
Gene Full Name	interleukin 22
Background	IL-22 is a member of the IL-10 family of regulatory cytokines which includes IL-10, IL-19, IL-20, IL-22, IL-24 and IL-26. Members of this family share partial homology in their amino acid sequences, but they are dissimilar in their biological functions. Produced by T lymphocytes, IL-22 inhibits IL-4 production by Th2 cells, and induces acute phase reactants in the liver and pancreas. IL-22 signals through a receptor system consisting of IL-10R-beta/CRF2-4 and IL-22R, both of which are members of the class II cytokine-receptor family. Recombinant murine IL-22 is a 33.4 kDa non-disulfide-linked homodimeric protein containing of two 146 amino acid polypeptide chains.
Highlight	Related products: IL22 antibodies ; IL22 ELISA Kits ; IL22 recombinant proteins ; New ELISA data calculation tool: Simplify the ELISA analysis by GainData
Research Area	Immune System kit; Signaling Transduction kit



ARG80218 Mouse IL22 ELISA Kit standard curve image

ARG80218 Mouse IL22 ELISA Kit results of a typical standard run with optical density reading at 450 nm.