

## ARG80239 Rat IgG1 ELISA Kit

Package: 96 wells  
Store at: 4°C

### Component

Cat. No.	Component Name	Package	Temp
ARG80239-001	Antibody-coated microplate	8 X 12 strips	4°C. Unused strips should be sealed tightly in the air-tight pouch.
ARG80239-002	Standard (Lyophilized)	3 X 50 ng/vial	4°C
ARG80239-003	Standard diluent buffer	40 ml	4°C
ARG80239-004	Antibody conjugate concentrate	400 µl	4°C
ARG80239-005	Antibody diluent buffer	16 ml	4°C
ARG80239-006	HRP-Streptavidin concentrate	400 µl	4°C (Protect from light)
ARG80239-007	HRP-Streptavidin diluent buffer	16 ml	4°C
ARG80239-008	20X Wash buffer	50 ml	4°C
ARG80239-009	TMB substrate	12ml	4°C (Protect from light)
ARG80239-010	STOP solution	12ml	4°C
ARG80239-011	Plate sealer	4 strips	Room temperature

### Summary

Product Description	ARG80239 Rat IgG1 ELISA Kit is an Enzyme Immunoassay kit for the quantification of Rat IgG1 in Serum, Plasma, Cell culture supernatants.
Tested Reactivity	Rat
Tested Application	ELISA
Specificity	No significant cross-reactivity or interference with Rat IgG2, IgG3 and IgG4
Target Name	IgG1
Conjugation	HRP
Conjugation Note	Substrate: TMB and read at 450 nm
Sensitivity	0.8 ng/ml
Sample Type	Serum, Plasma, Cell culture supernatants
Standard Range	1.56 - 100 ng/ml
Sample Volume	100 µl

Precision	CV: less than 10%
Alternate Names	Immunoglobulin G1

## Application Instructions

---

Assay Time	4 hours
------------	---------

## Properties

---

Form	96 well
Storage instruction	Store the kit at 2-8°C. Keep microplate wells sealed in a dry bag with desiccants. Do not expose test reagents to heat, sun or strong light during storage and usage. Please refer to the product user manual for detail temperatures of the components.
Note	For laboratory research only, not for drug, diagnostic or other use.

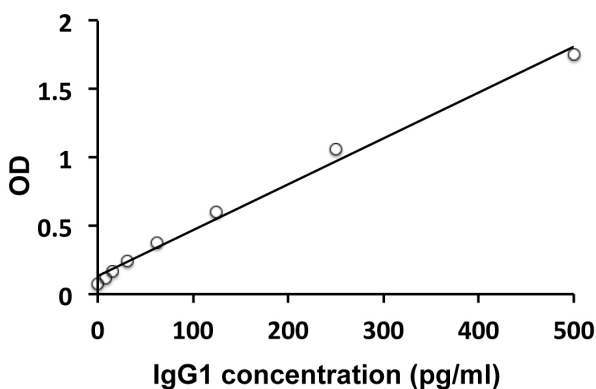
## Bioinformation

---

Background	The IgG subclasses contain antibodies to components of many disease-causing bacteria and viruses, each subclass serves a slightly different function in protecting the body against infection. For example, IgG1 and IgG3 subclasses are rich in antibodies against proteins such as the toxins produced by the diphtheria and tetanus bacteria, as well as antibodies against viral proteins. In contrast, IgG2 antibodies are predominantly against the polysaccharide (complex sugar) coating (capsule) of certain disease-producing bacteria (such as, <i>Streptococcus pneumoniae</i> and <i>Haemophilus influenzae</i> ).
Highlight	Related products: <a href="#">IgG1 ELISA Kits</a> ; <a href="#">IgG1 recombinant proteins</a> ; New ELISA data calculation tool: <a href="#">Simplify the ELISA analysis by GainData</a>
Research Area	Immune System kit

## Images

---



ARG80239 Rat IgG1 ELISA Kit standard curve image

ARG80239 Rat IgG1 ELISA Kit results of a typical standard run with optical density reading at 450 nm.