

## ARG80401 Human Parietal Cell antibody ELISA Kit

Package: 96 wells  
Store at: 4°C

### Summary

Product Description	ARG80401 Human Parietal Cell antibody ELISA Kit is an Enzyme Immunoassay kit for the quantification of Human Parietal Cell Ab in serum and plasma (EDTA, heparin, citrate).
Tested Reactivity	Hu
Tested Application	ELISA
Target Name	Parietal Cell antibody
Conjugation	HRP
Conjugation Note	Substrate: TMB and read at 450 nm.
Sensitivity	0.5 U/ml
Sample Type	Serum and plasma (EDTA, heparin, citrate).
Standard Range	6.3 - 100 U/ml
Sample Volume	10 µl

### Application Instructions

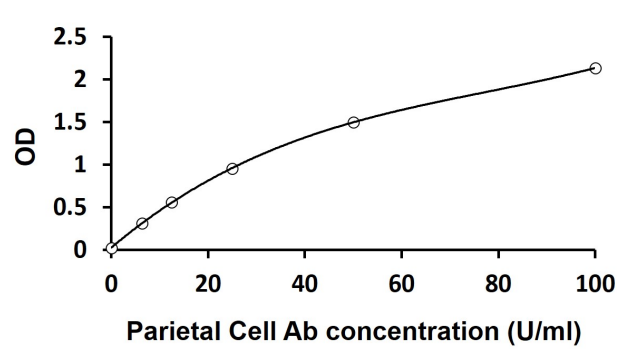
Assay Time	30, 15, 15, 5 min (RT)
------------	------------------------

### Properties

Form	96 well
Storage instruction	Store the kit at 2-8°C. Keep microplate wells sealed in a dry bag with desiccants. Do not expose test reagents to heat, sun or strong light during storage and usage. Please refer to the product user manual for detail temperatures of the components.
Note	For laboratory research only, not for drug, diagnostic or other use.

### Bioinformation

Highlight	Related products:  New ELISA data calculation tool: <a href="#">Simplify the ELISA analysis by GainData</a>
Research Area	Immune System kit



ARG80401 Human Parietal Cell antibody ELISA Kit standard curve image

ARG80401 Human Parietal Cell antibody ELISA Kit results of a typical standard run with optical density reading at 450 nm.