

## ARG80437 Human 3 CAT (Adrenaline + Noradrenaline + Dopamine) ELISA Kit

Package: 96 wells

Store at: 4°C

### Summary

Product Description	ARG80437 Human 3 CAT (Adrenaline + Noradrenaline + Dopamine) ELISA Kit is an Enzyme Immunoassay kit for the quantification of Adrenaline (Epinephrine), Noradrenaline (Norepinephrine), and Dopamine in plasma (EDTA) and urine. This kit includes 96 wells for Adrenaline, 96 wells for Noradrenaline and 96 wells for Dopamine.
Tested Reactivity	Hu
Tested Application	ELISA
Target Name	3 CAT (Adrenaline + Noradrenaline + Dopamine)
Conjugation	HRP
Sensitivity	AD: 0.8 ng/ml (urine); 0.01 pg/ml (plasma). NAD: 1.7 ng/ml (urine); 0.04 pg/ml (plasma). DOP: 2.5 ng/ml (urine); 1.9 pg/ml (plasma).
Sample Type	Plasma (EDTA) and urine.
Standard Range	AD: 1 - 200 ng/ml NAD: 5 - 1000 ng/ml DOP: 4.5 - 2000 ng/ml
Sample Volume	10 µl urine; 300 µl plasma

### Application Instructions

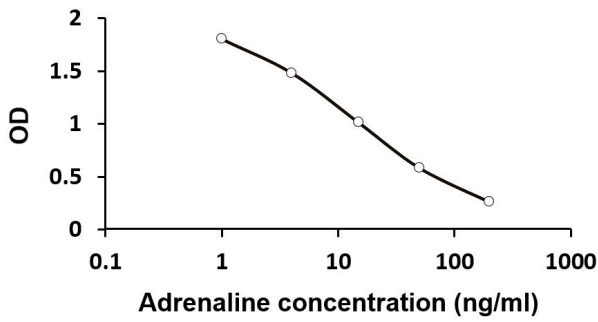
Assay Time	30 min, 2 h, 30, 25 min (RT/shaker)
------------	-------------------------------------

### Properties

Form	96 well
Storage instruction	Store the kit at 2-8°C. Keep microplate wells sealed in a dry bag with desiccants. Do not expose test reagents to heat, sun or strong light during storage and usage. Please refer to the product user manual for detail temperatures of the components.
Note	For laboratory research only, not for drug, diagnostic or other use.

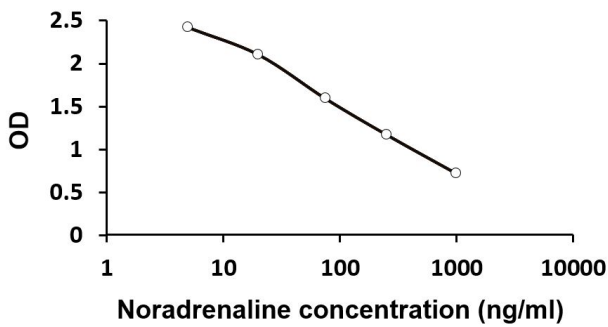
### Bioinformation

Highlight	Related products: <a href="#">3 CAT ELISA Kits;</a> Related news: <a href="#">Astrocyte-to-neuron conversion for Parkinson's disease treatment</a> New ELISA data calculation tool: <a href="#">Simplify the ELISA analysis by GainData</a>
Research Area	Neuroscience kit; Signaling Transduction kit



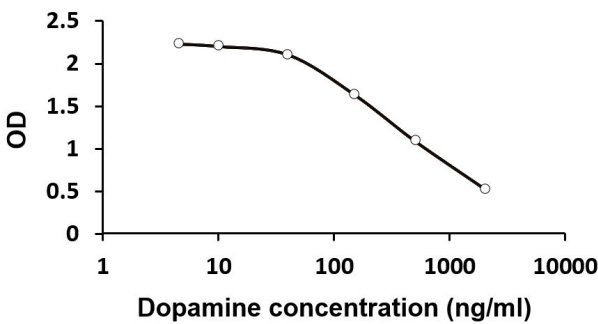
ARG80437 Human 3 CAT (Adrenaline + Noradrenaline + Dopamine) ELISA Kit standard curve example image for Adrenaline

The representative standard curve of ARG80437 Human 3 CAT (Adrenaline + Noradrenaline + Dopamine) ELISA Kit. The standard curve is for demonstration only and cannot be used in place of data generations at the time of assay. The standard curve should be generated each time the assay is performed.



ARG80437 Human 3 CAT (Adrenaline + Noradrenaline + Dopamine) ELISA Kit standard curve example image for Noradrenaline

The representative standard curve of ARG80437 Human 3 CAT (Adrenaline + Noradrenaline + Dopamine) ELISA Kit. The standard curve is for demonstration only and cannot be used in place of data generations at the time of assay. The standard curve should be generated each time the assay is performed.



ARG80437 Human 3 CAT (Adrenaline + Noradrenaline + Dopamine) ELISA Kit standard curve example image for Dopamine

The representative standard curve of ARG80437 Human 3 CAT (Adrenaline + Noradrenaline + Dopamine) ELISA Kit. The standard curve is for demonstration only and cannot be used in place of data generations at the time of assay. The standard curve should be generated each time the assay is performed.